

CAMELOT

On-boarding of Abacus

Enterprise Architecture Modelling Tool

02 July 2019

For BCS use only - not for external distribution

Contents

- Introduction
 - Camelot
 - EA Team
- Abacus
 - Overview
 - Implementation Plan
 - Maturity Chasm
 - Maturity Plan
 - Our Journey
 - Use Cases
 - Dashboards
 - User Groups
- Lessons learned

A fast-moving games business known for one of the
UK's best-loved consumer brands:
The National Lottery

Facts



£30m

Every week National Lottery players raise, on average, around £30 million for Good Causes



95%

Amount of revenue The National Lottery gives back to winners and society.



200

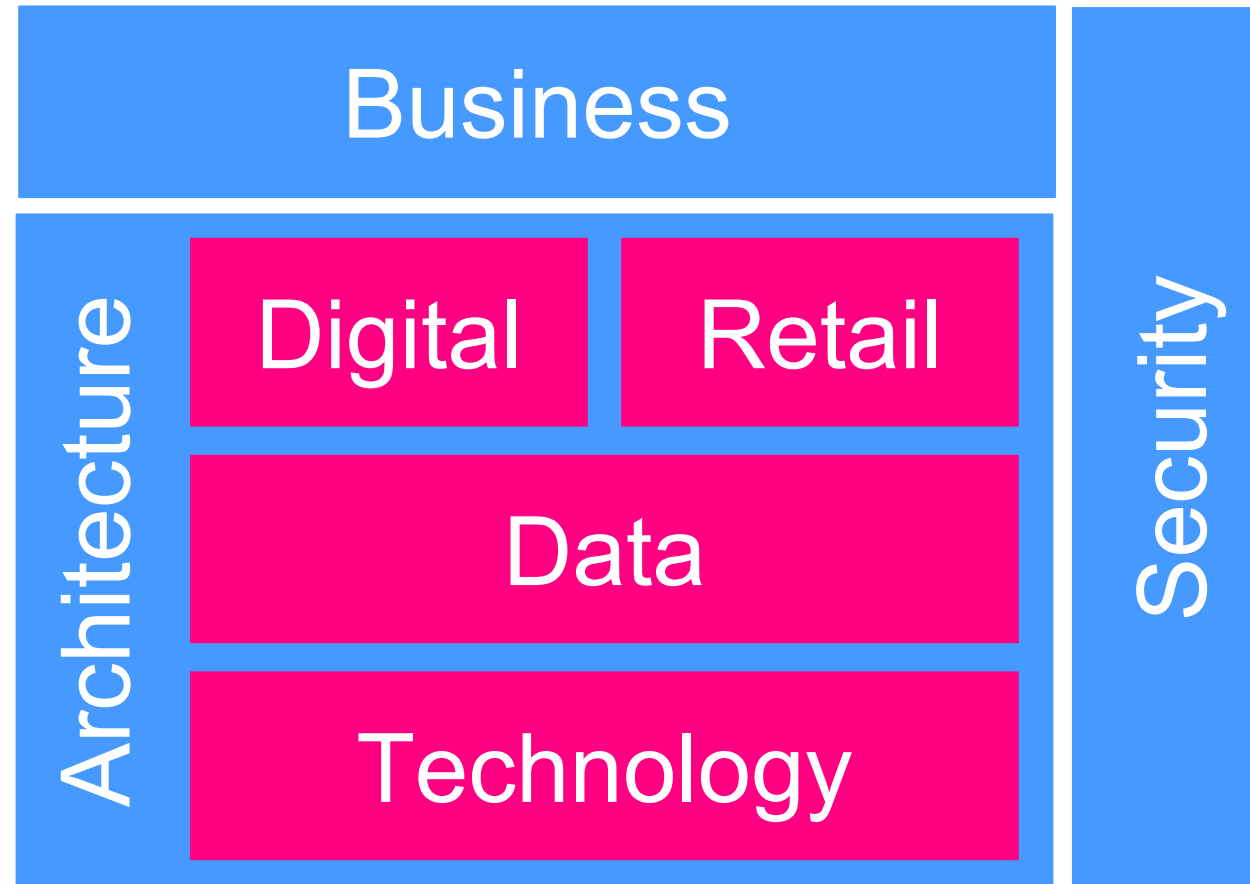
Average number of National Lottery grants in every UK postcode district.



5,350

Number of National Lottery millionaires created to date.

EA Function



Abacus

Data driven IT Strategy, Planning and Architecture Modelling Tool

Founded by the architecture-based engineering group from University of Technology, Sydney in 2001

Recognised as one of the leading Enterprise Architecture Tools by Gartner and Forrester

Meta Model supports industry recognised frameworks like TOGAF, UML, Archimate, BPMN, etc.

Metrics based architecture through built-in evaluators and algorithms

“All is possible with ABACUS; with no customization and very little training required.” - Avolution

Implementation Plan - 2017

Implementation Plan / 5 Day Training Plan

The ABACUS Training program described below is intended to serve as a rough outline of the topics with which our clients should have familiarity to ensure a successful ABACUS deployment.

Pre-Work: Before the initial site visit, the client should be instructed to provide or prepare for review the following items:

- Define project scope, identify stakeholders/team/contributors, identify data sources and retrieve existing data

Agenda

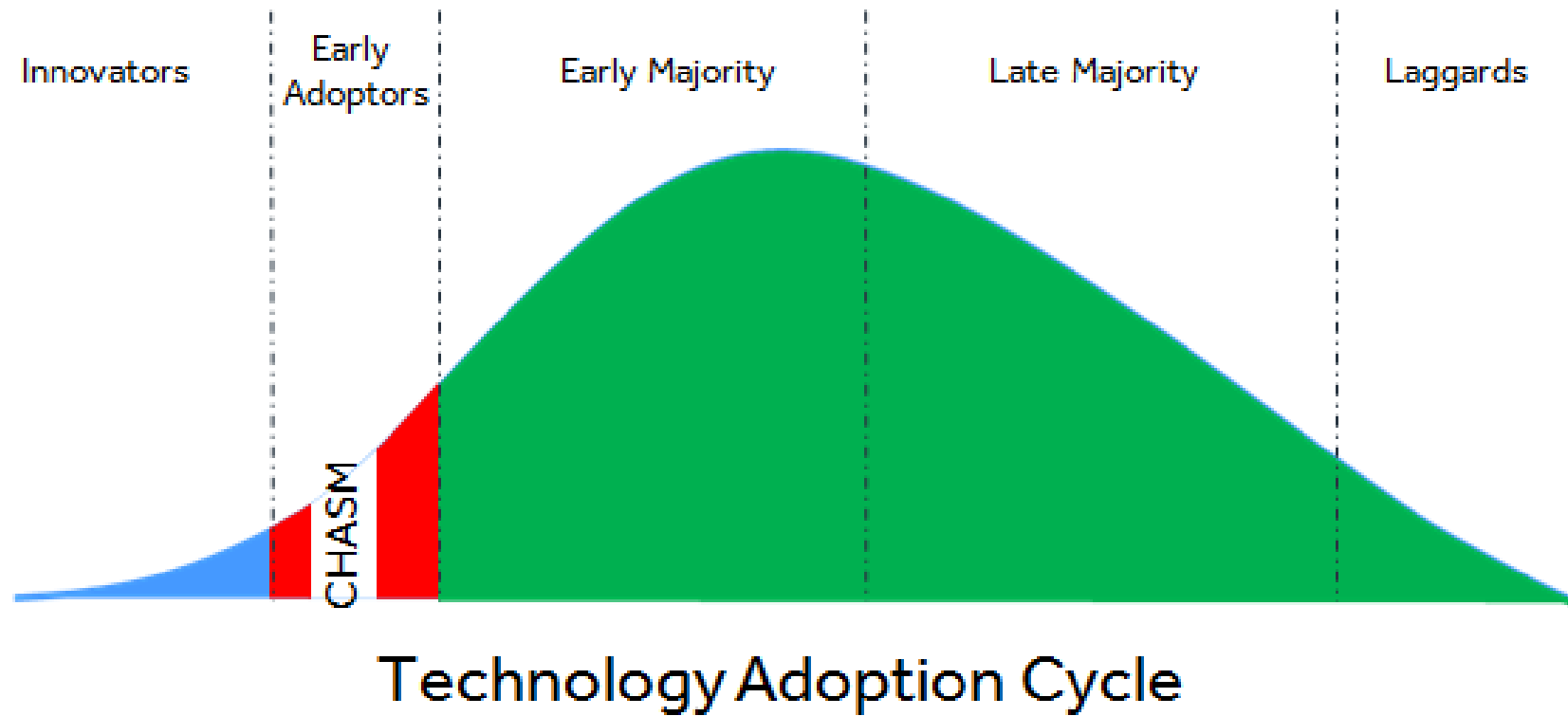
| Day 1 | | Day 2 | | Day 3 | | Day 4 | | Day 5 | |
|------------------|---|--------------|---|--------------|--|---------------|---|--------------|---|
| <i>Morning</i> | | | | | | | | | |
| Boss | Scoping Session | Power | Diagramming • Stencil • Legend | Users | Introduction | Power + Users | Analysis • Drill-downs • Queries | Evolution | Cloud Reviewer |
| <i>Break</i> | | <i>Break</i> | | <i>Break</i> | | <i>Break</i> | | | |
| Power | Metamodel • Roles • Types | Power | Diagram Templates • Organization • Visio | Users | Catalogues • Navigating • Configuration • Data Entry • Aesthetics | Power + Users | Analysis • Matrices • Complexity • Extensions | Evolution | |
| <i>Afternoon</i> | | | | | | | | | |
| Power | Metamodel • Properties • Rules | Evolution | Configure and Import | Users | Diagrams • Using Templates • Modeling Basics | Power | Reports • Simple Tables | Power | Cloud Reviewer • AI/Publisher Roles • Auto-Publish |
| <i>Break</i> | | <i>Break</i> | | <i>Break</i> | | <i>Break</i> | | <i>Break</i> | |
| Power | Catalogues • Configuration • Organization • Excel | Evolution | | Users | Diagrams • Aesthetics | Power | Reports • Simple Charts | Boss + Team | Wrap • Present • Next steps |



Copyright © 2001-2016 Avolution Pty Ltd, related entities and/or licensors

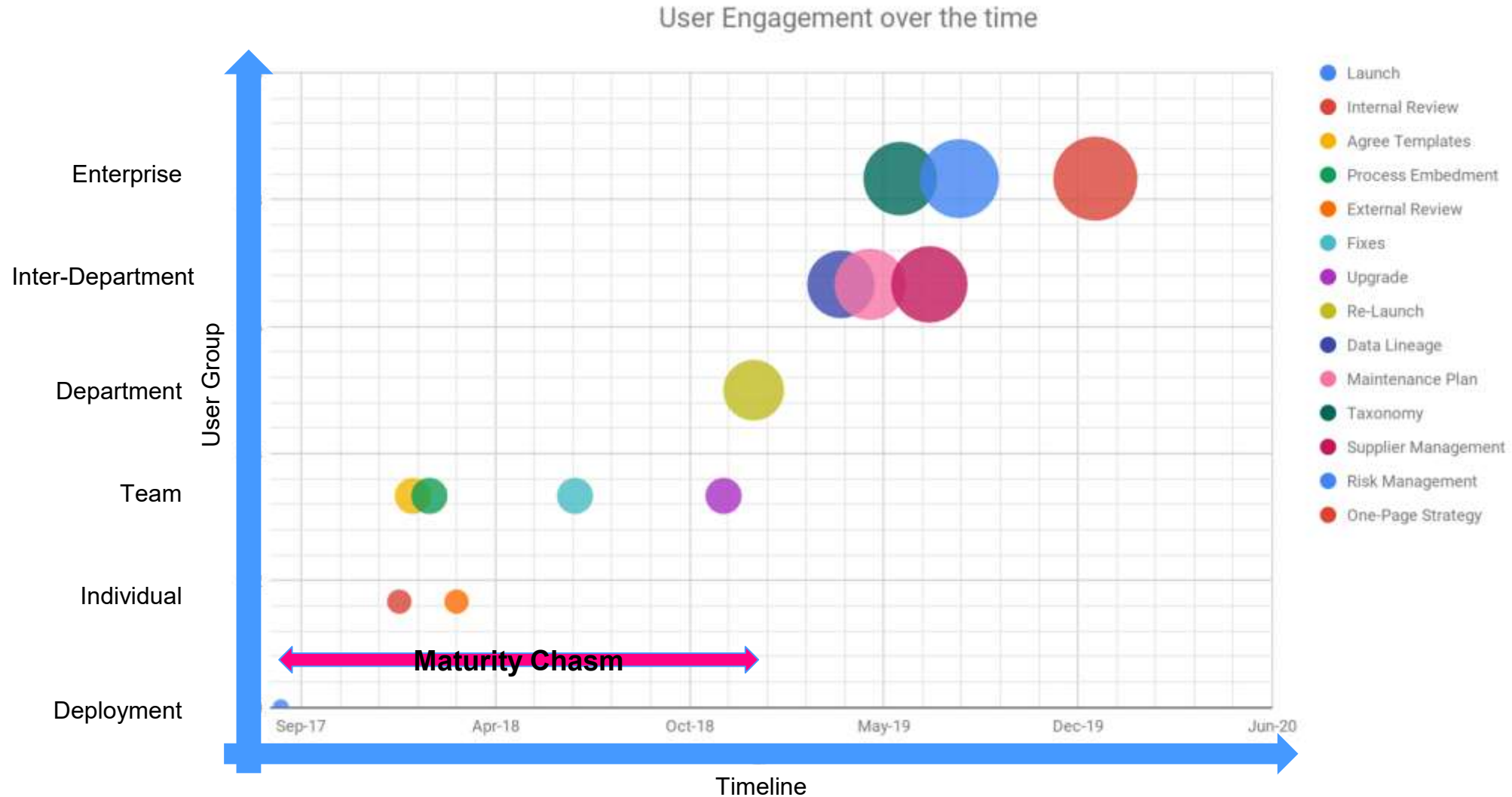


Maturity Chasm



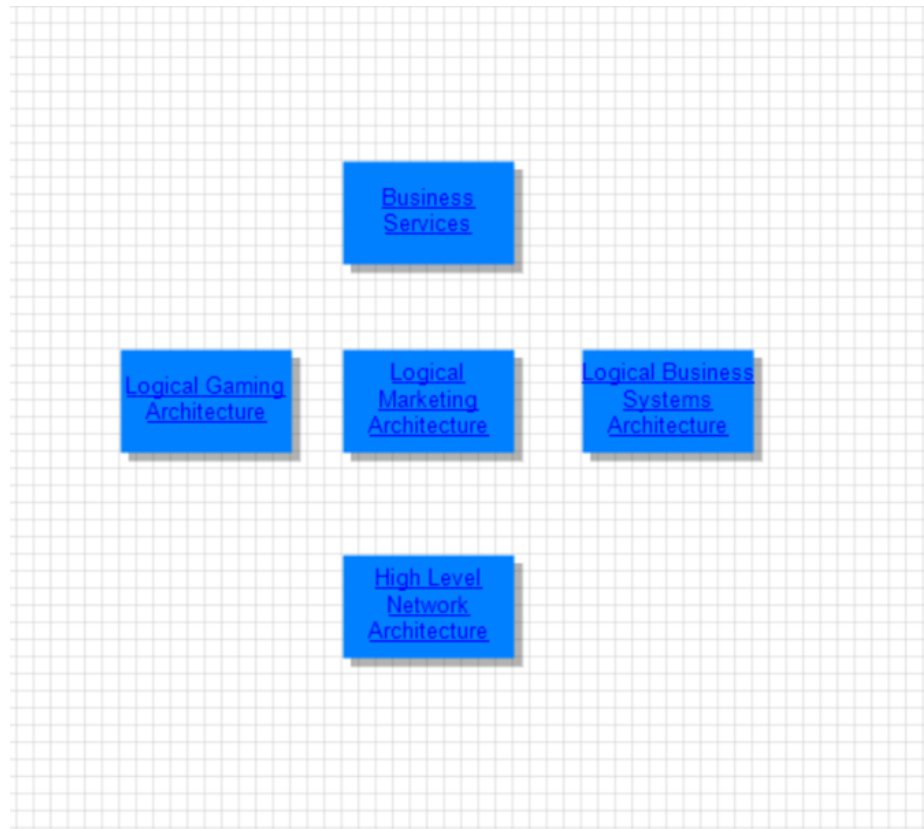
* Inspired by "Crossing the Chasm: Marketing and Selling Disruptive Products to Mainstream Customers" by Geoffrey A Moore

Maturity Plan



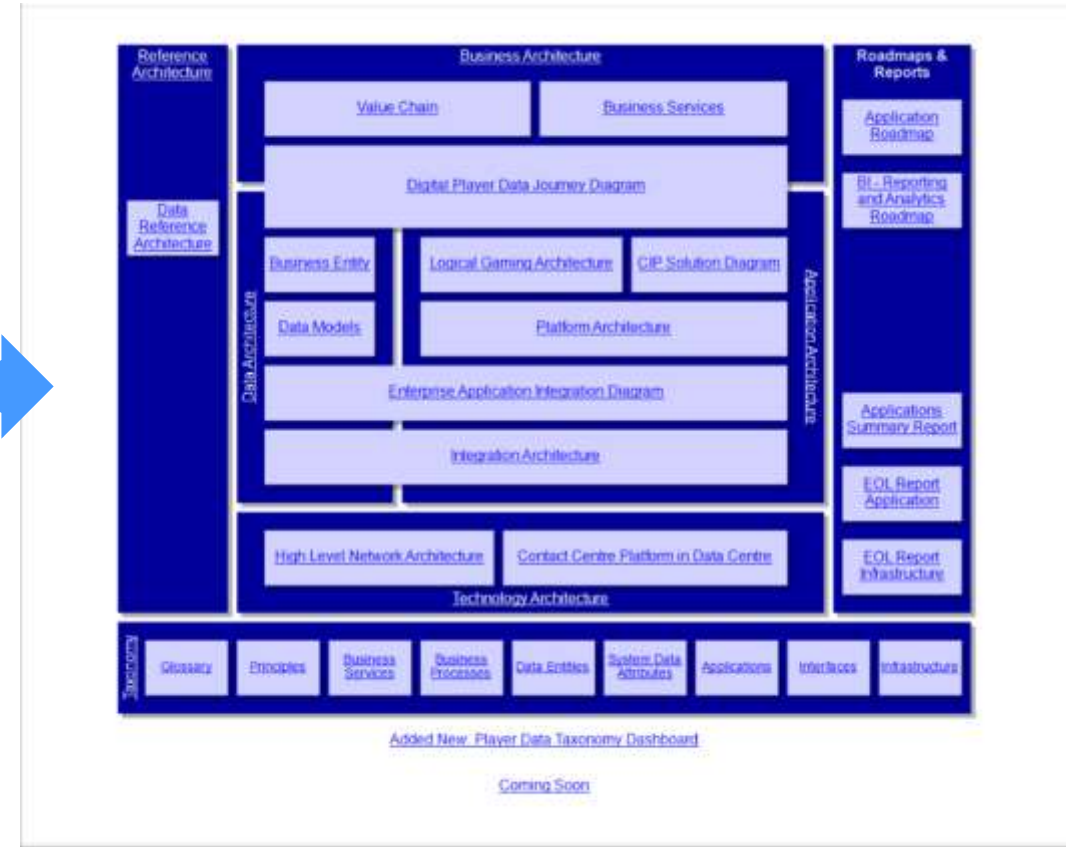
Our Journey

Then



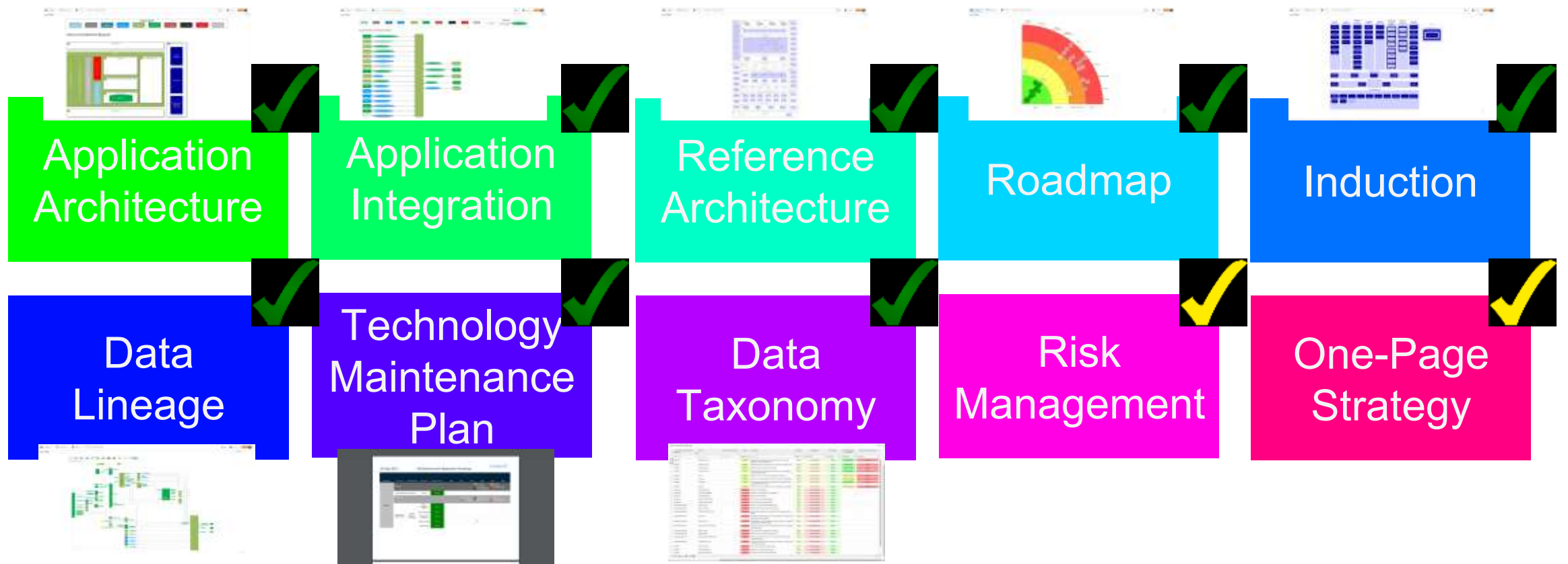
Users: 5

Now

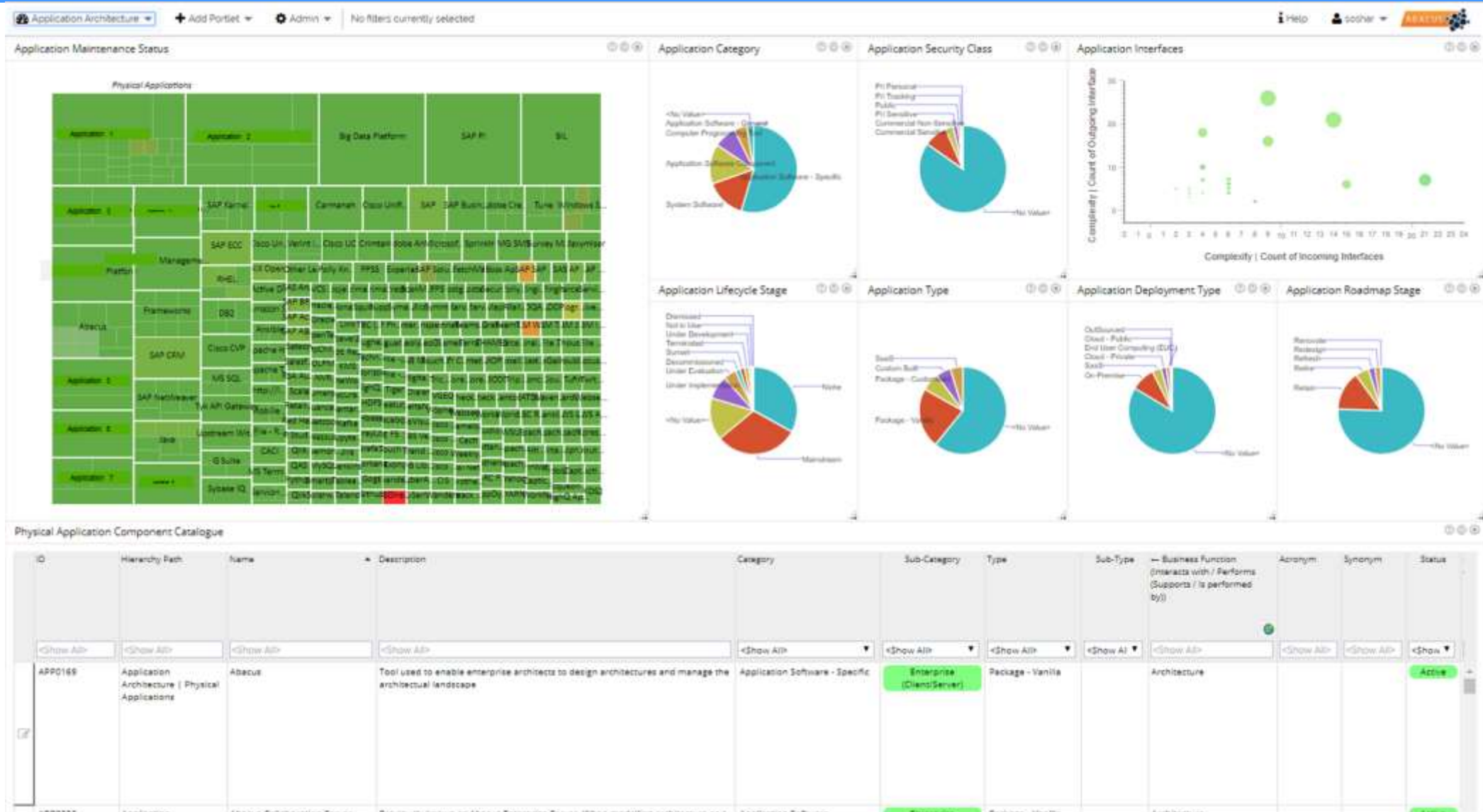


Users: 46

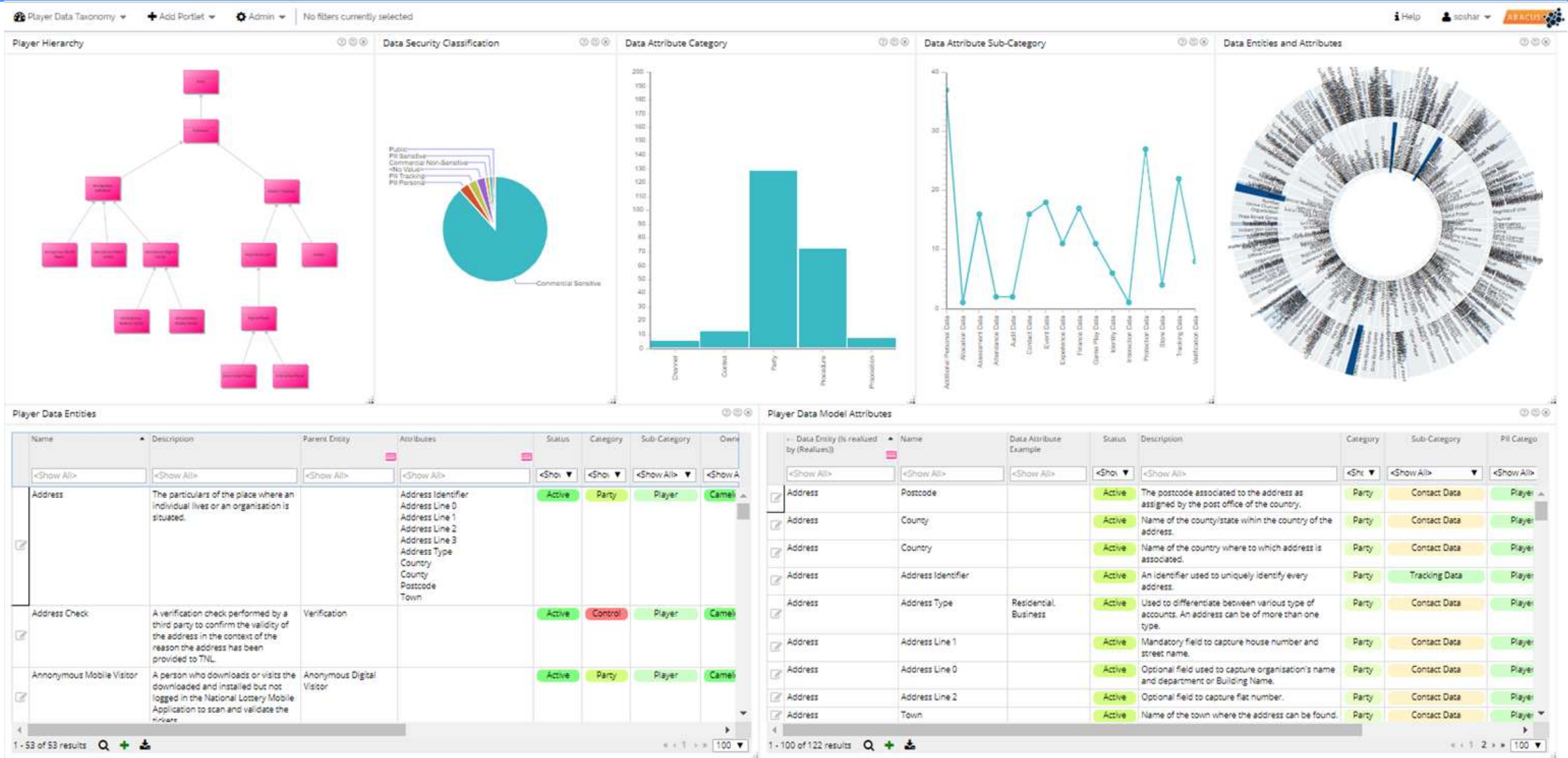
Use Cases - Short to Mid-term Plan



Dashboard 1 : Application Management



Dashboard 2 : Data Taxonomy



Abacus Users

Enterprise Architecture

- Is-Live

Data Custodians

- Is-Live

Information Security

- On-Boarding
- Go-live

Business Risk Management

- Demo
- Set-up
- On-Board
- Go-live

Technology

- Reference point (Read-only)
- System Managers (Editors)

Enterprise

- Reference point (Read-only)
- Risk Managers (Editors)

Lessons Learned

- User involvement
- Plan - short, mid, long term
- Process embedment
- Champion
- Supplier engagement
- Engage - one and all
- Show, tell, and sell

It is not only about Enterprise Architecture,
it is about the whole Organisation.

CAMELOT

Thank you!

Sonia Sharma

sonia.sharma@camelotgroup.co.uk