

Can we supercharge architecture governance with a user-centric centre of excellence?

Subhendu Maji



Enterprise Architecture
Specialist Group

5th Annual Conference
Thursday 29th September 2022
London, UK

#BCS
#BCSEASG
#EASGAC2022

We are explorers!

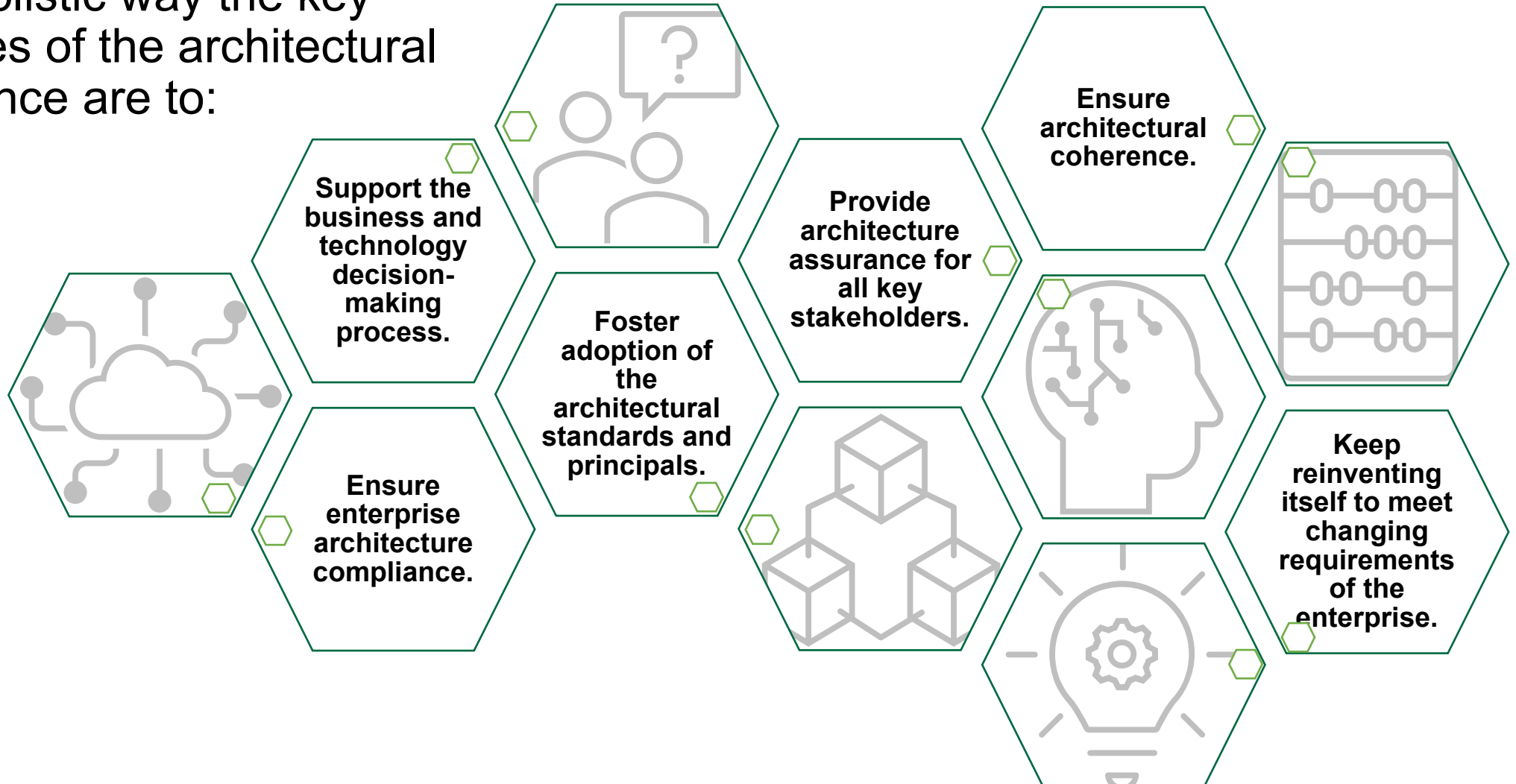


With the quest for rapid digital transformation, many organisations are facing a challenge to balance between robust architecture governance and a greater demand for agility.

Let's explore if we have an opportunity to not only ease this challenge but also supercharge architecture governance with a user-centric centre of excellence so that digital transformation can be powered by people.

Architecture Governance

In a simplistic way the key objectives of the architectural governance are to:



How is architecture governance done traditionally and evolving recently?



A framework or a modified framework is followed.



Domain-specific Center of Excellence and communities of Practice are on the rise. I.e. Innovation, Cloud, Low-code No-code etc.



Increasing focus on Monitoring, Events and alerts to trigger EA modification.



Unifying governance for Strategic Planning, Enterprise Architecture Management, Project Portfolio Management, and Change Management.



Heightened awareness of consequences for non-compliance pushing for expedited governance activities.

Contemporary common challenges with the architecture governance



Ubiquitous quest for rapid digital transformation / digitisation / industrial revolution



Difficulty to balance robust architecture governance and a greater demand for agility



End users and non-technical developers are on the rise



End user driven subscription and easy integration



Still IT is largely seen as a Cost centre rather than Opportunity centre



Scaling safely, securely and in a compliant way.

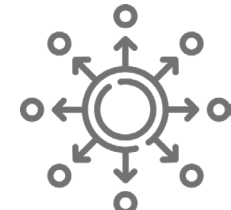
Types of CoE



Centralised

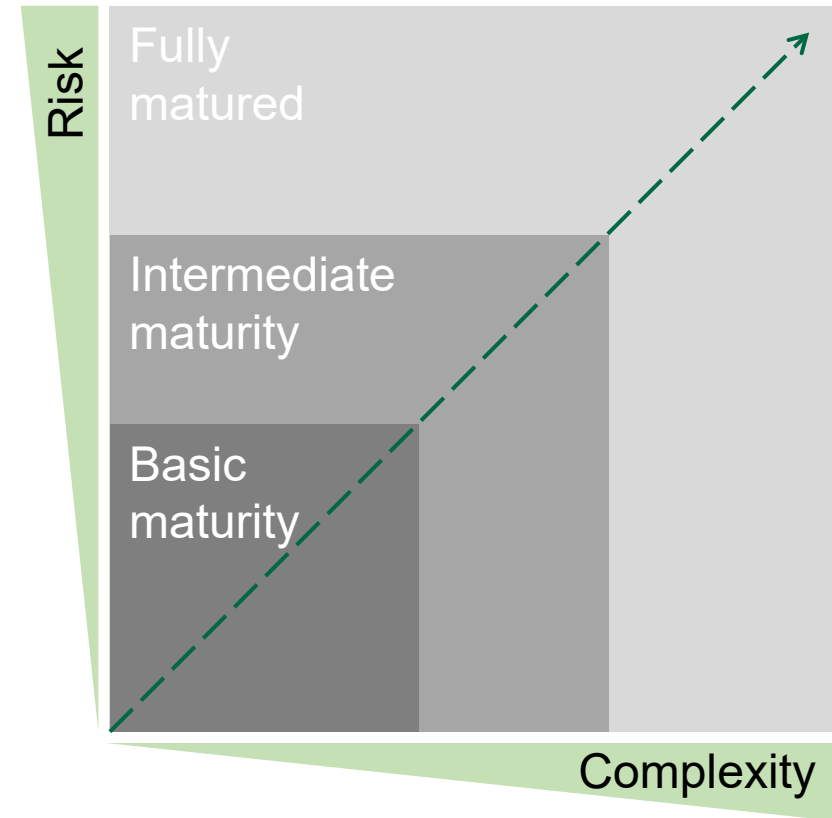


Hybrid

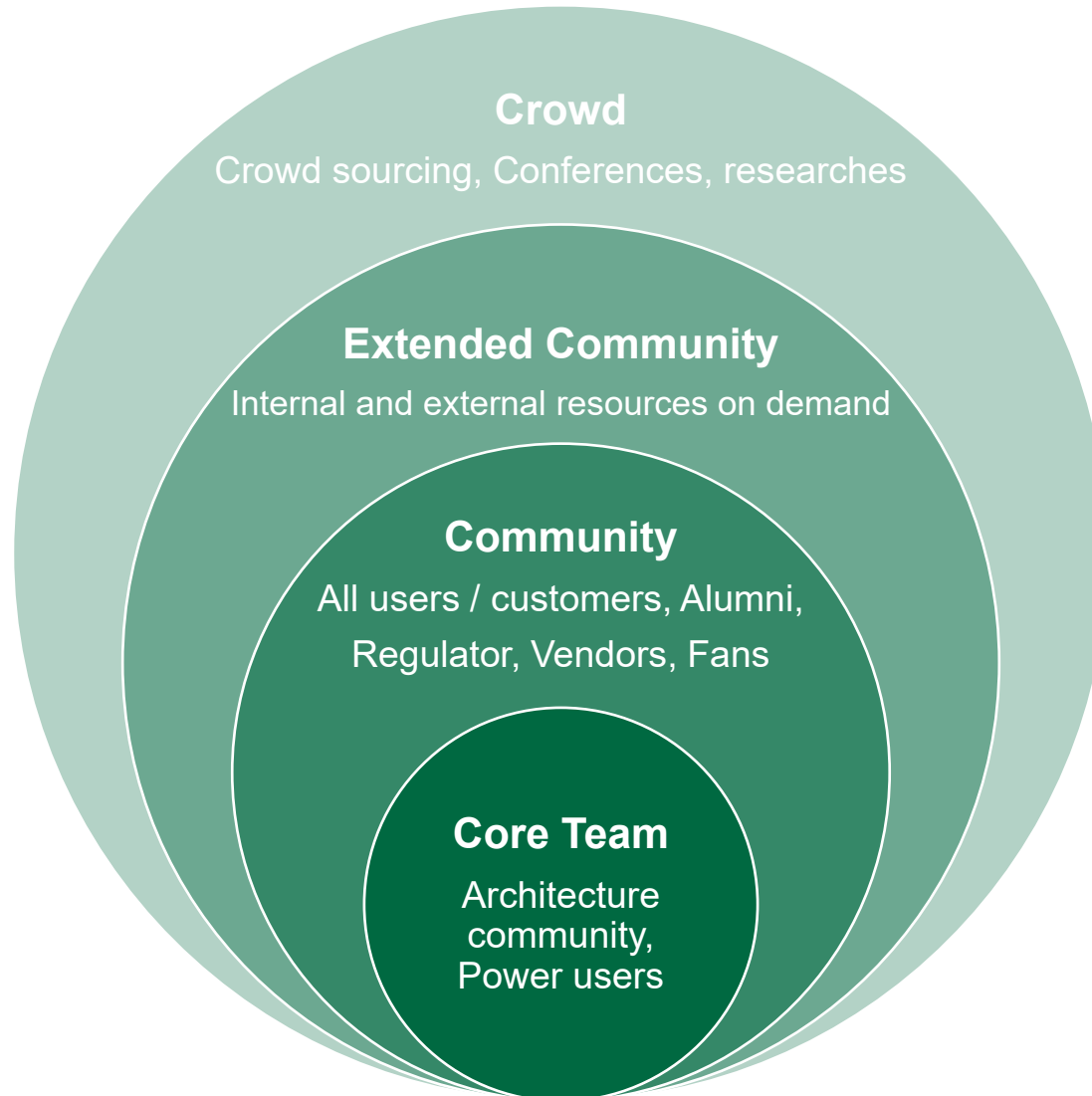


Decentralised

How a CoE can operate?



Who is in the CoE?

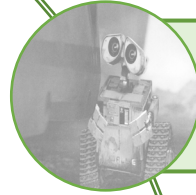


Lessons and observations

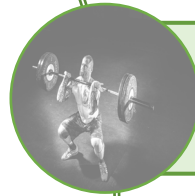


Could we conclude...

A user-centric centre
of excellence can
potentially
supercharge
architecture
governance by



Changing Shadow IT into Citizen IT



Deliver more value with less effort



Nurturing new ideas and perspectives



Powering digital transformation by people

Thank you!