

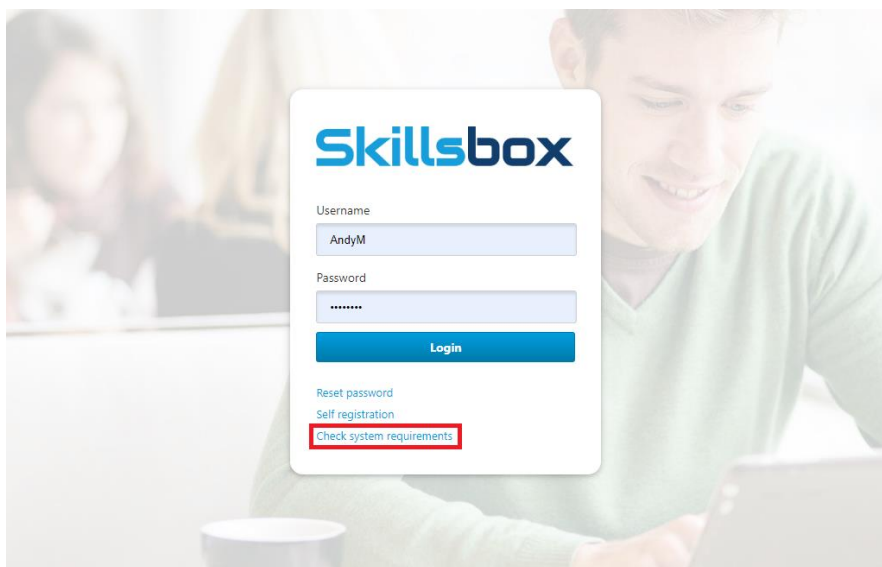


Quick Start Guide for In-Application Testing

Quick start guide for in application testing

This document is a quick start guide intended for system administrators who are preparing workstations for candidates. The PSI In-application Plugin can be deployed to workstations in a network using proprietary deployment software, if available, or manually installed on individual machines using the below instructions.

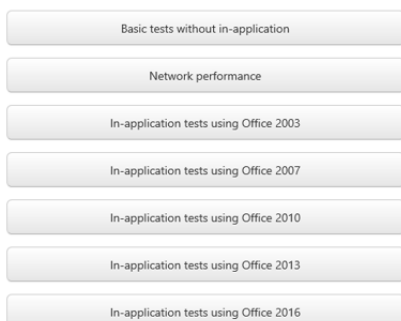
Before doing anything, it is best to run a System Check, this can be done from the Skillsbox login screen by selecting *Check System Requirements*. This will provide you with the information and links to install the necessary software.



1 Installing the Plugin

1. The PSIIAPlugin.msi must be installed prior to running any tests the plugin can be downloaded from the *Check System Requirements page* or the download link shown before running a test (both shown below).

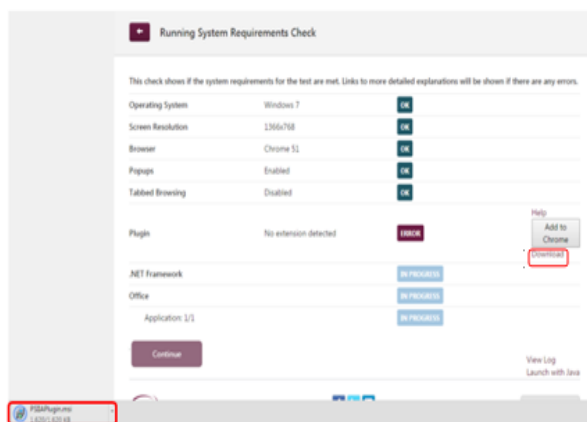
Download button on the System Requirements Page



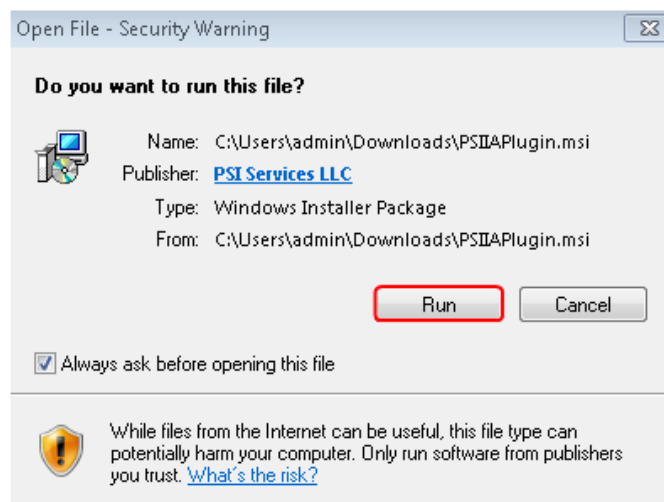
The System Requirements are also available in PDF format [Download](#)

Download the PSI In-application Plugin [Download](#)

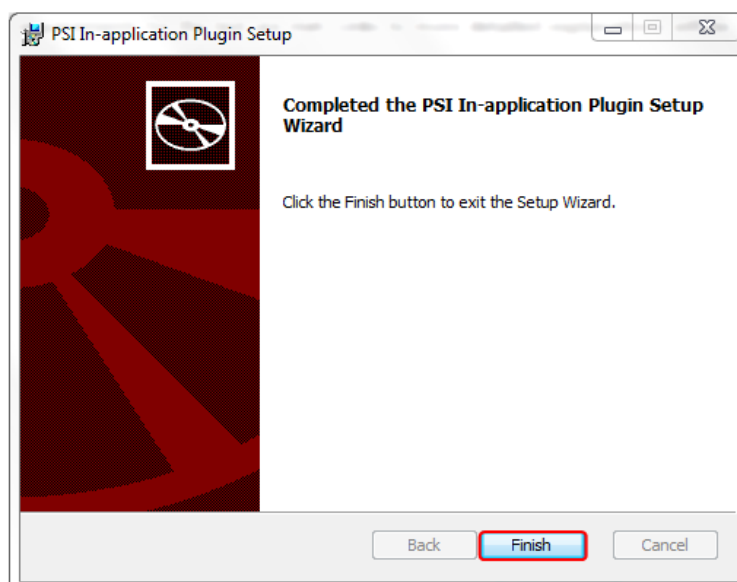
Download link when running the system requirements check



2. You will receive a message asking you to either **Run** or **Save** the installation, to install straight away select **Run**. You can select **Save** if you wish to save the installation and run it at a later date. When you select Run you will see the below pop-up asking you again to **Run** the installer. (You will need administrator rights to run this installer)



3. Once the installation is complete you will get the below message stating from the installation wizard has finished and you can click on the **Finish** button. The setup is now complete for Internet Explorer, users on Chrome or Mozilla Firefox must install an additional plugin.



2 Installing the Extension

2.1 Google Chrome

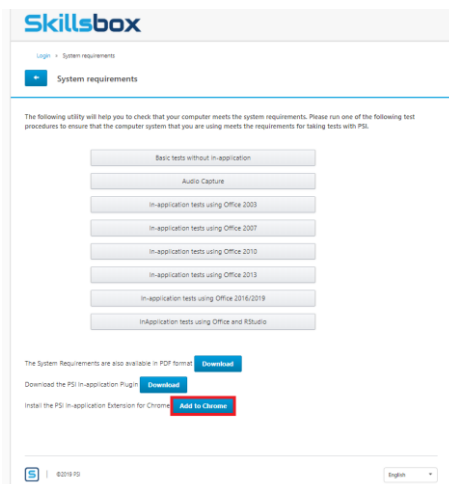
To run the in-application tests in Google Chrome an additional plugin is required. This method advises on how to install the plugin prior to testing. The PSI in-application plugin must be installed before adding any extensions

1. Enter the following URL into the address bar:

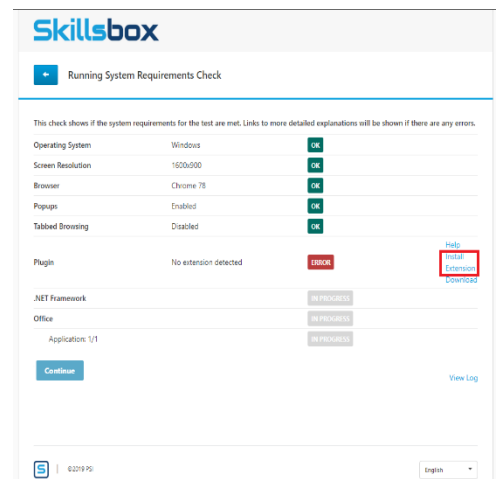
https://chrome.google.com/webstore/search/psi%20in-application?_category=extensions

You can also access the URL from the **Add to Chrome** button on the **Check System Requirements Page** or when running a system requirements check from the login screen.

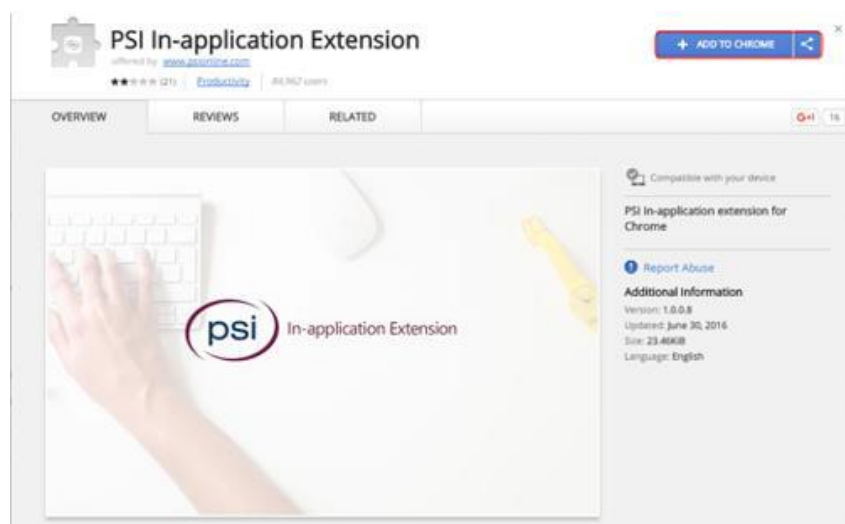
Add to Chrome from the check systems requirements page



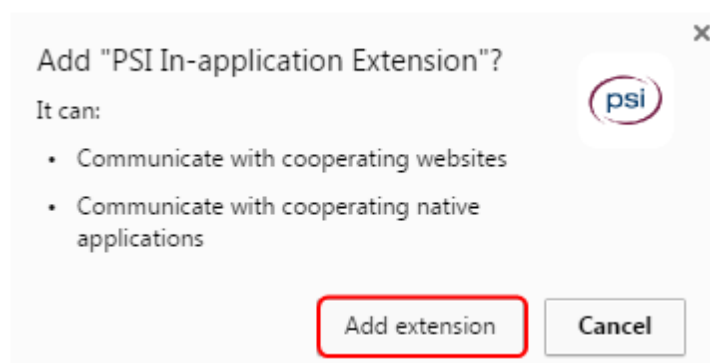
Add to Chrome button when running a test



2. Click the **Add to Chrome** button



3. Click the **Add Extension** button



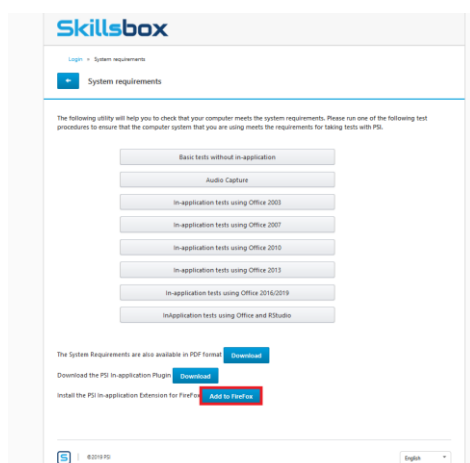
4. The Extension is now added for Chrome and you will be able to perform you tests.

2.2 Mozilla Firefox

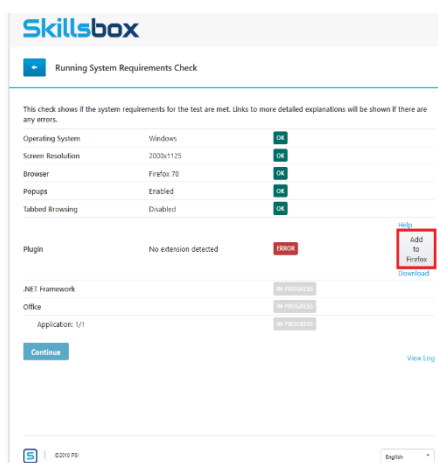
Much like in Chrome to run the in-application testing Firefox also needs an additional extension. Please ensure the PSI in-application Plugin is installed prior to adding any extensions.

1. To install the extension for Firefox you can select the **Add to Firefox** from the *Check System Requirements* page or Select the **Add to Firefox** button when starting a test.

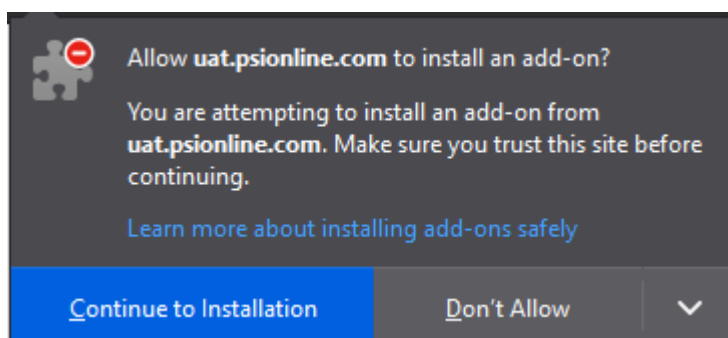
Add to Firefox from the check systems requirements page



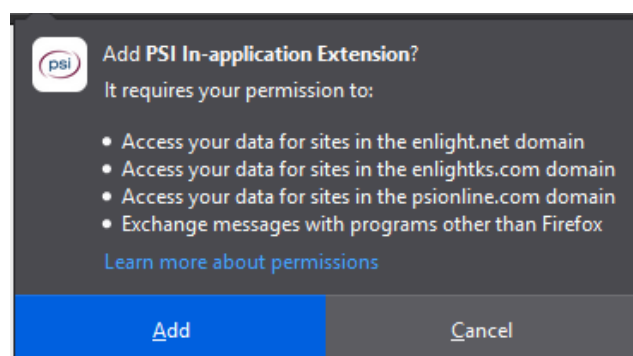
Add to Firefox button when running a test



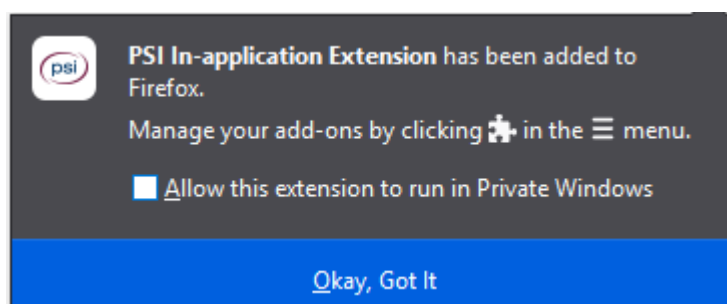
2. Once you have selected one of the above options you will be prompted to add the extension to Firefox you can select **Continue to Installation**.



3. Once you have selected to continue you will get a pop-up showing you the permissions the extension uses, you can select **Add**, this will then add the extension to Firefox.



4. Once the extension has been added you will get the below pop-up and you can select **Okay, Got It**.



5. The extension has now been added to Firefox and you can not continue with the testing.