



PROMS-G
Project Management
Specialist Group

BCS PROMS-G Spring School March 2023

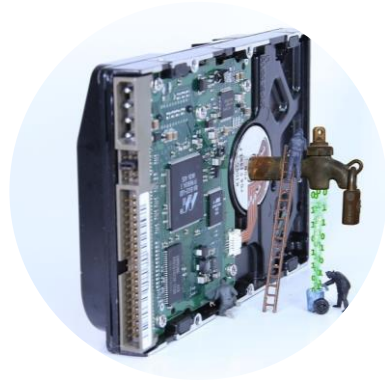
Week 2 16 March 2023

RPM and Project Case Studies

Dr Petrena Prince

Sustainability Program Manager

IBM Global Real Estate



We need to start
thinking
differently about
technology

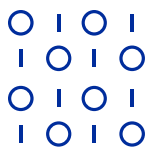
Sustainability in Global Real Estate is a must for people, planet and profit



Managing the **cost of real estate** is often the 2nd highest cost in an organization



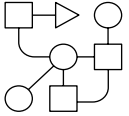
40% of emissions are created by facilities, impacting **sustainability**, an increasingly regulated space.



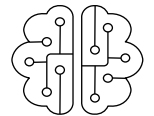
“Smart” buildings and assets create over **40 ZB of data annually**, but less than 30% is used



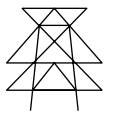
Examples of GRE use cases....



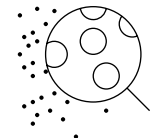
1. Understanding space utilization data to track usage and reimagine sustainable workplaces



2. Manage assets and maintain efficiency for sustainability benefits



3. Reduce operating costs within datacenters and reduce GHG from across IT infrastructure



4. Align sustainability goals to business objectives while complying with increasing regulatory demands



Common Business Challenges

Environmental projects are often neglected in the capital planning process

Utility breakdown not known for some buildings

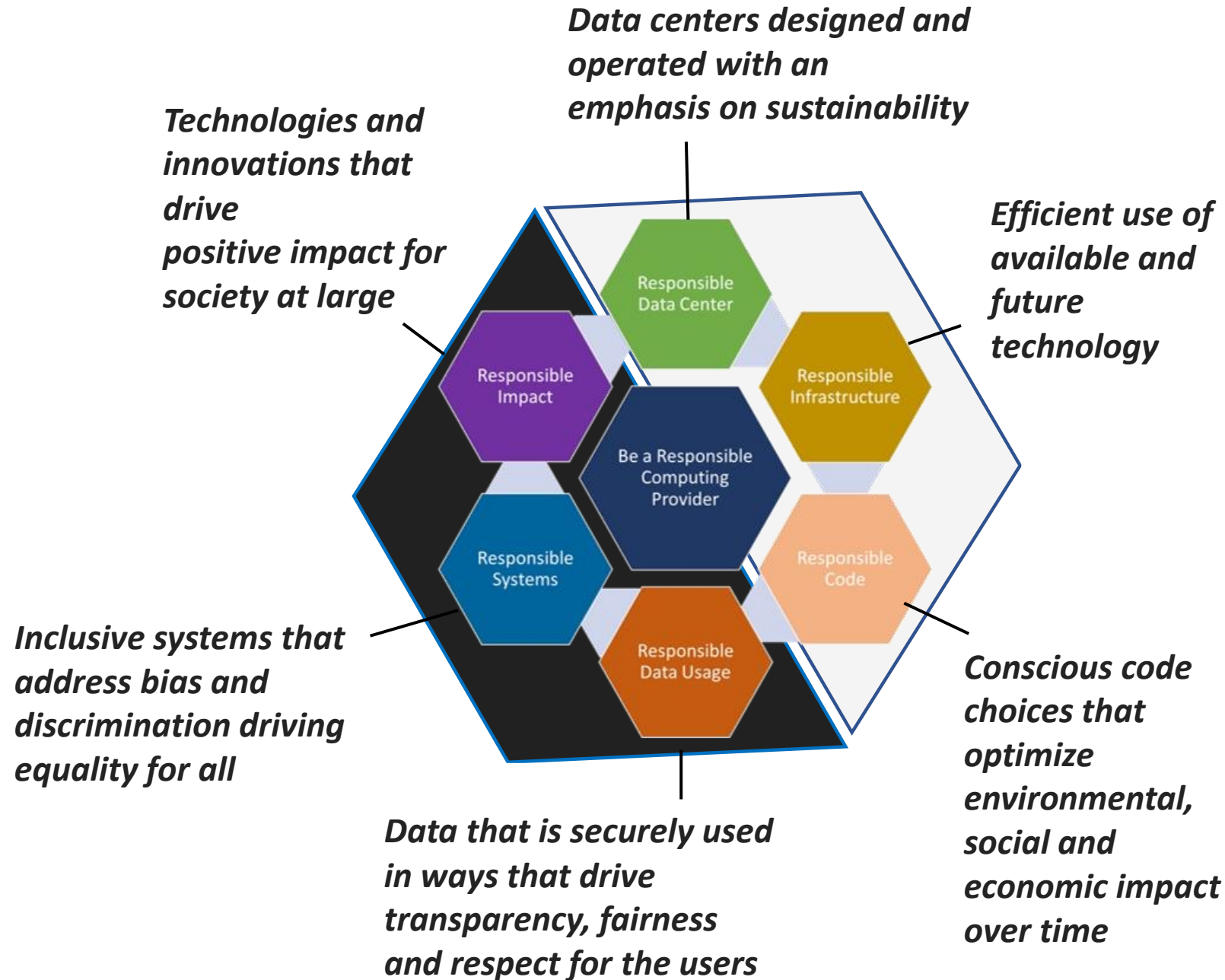
Data managed by a variety of systems & people

No centralized reporting

Many standards are required: LEED, HPSB, BREEAM, EO 13514, etc.

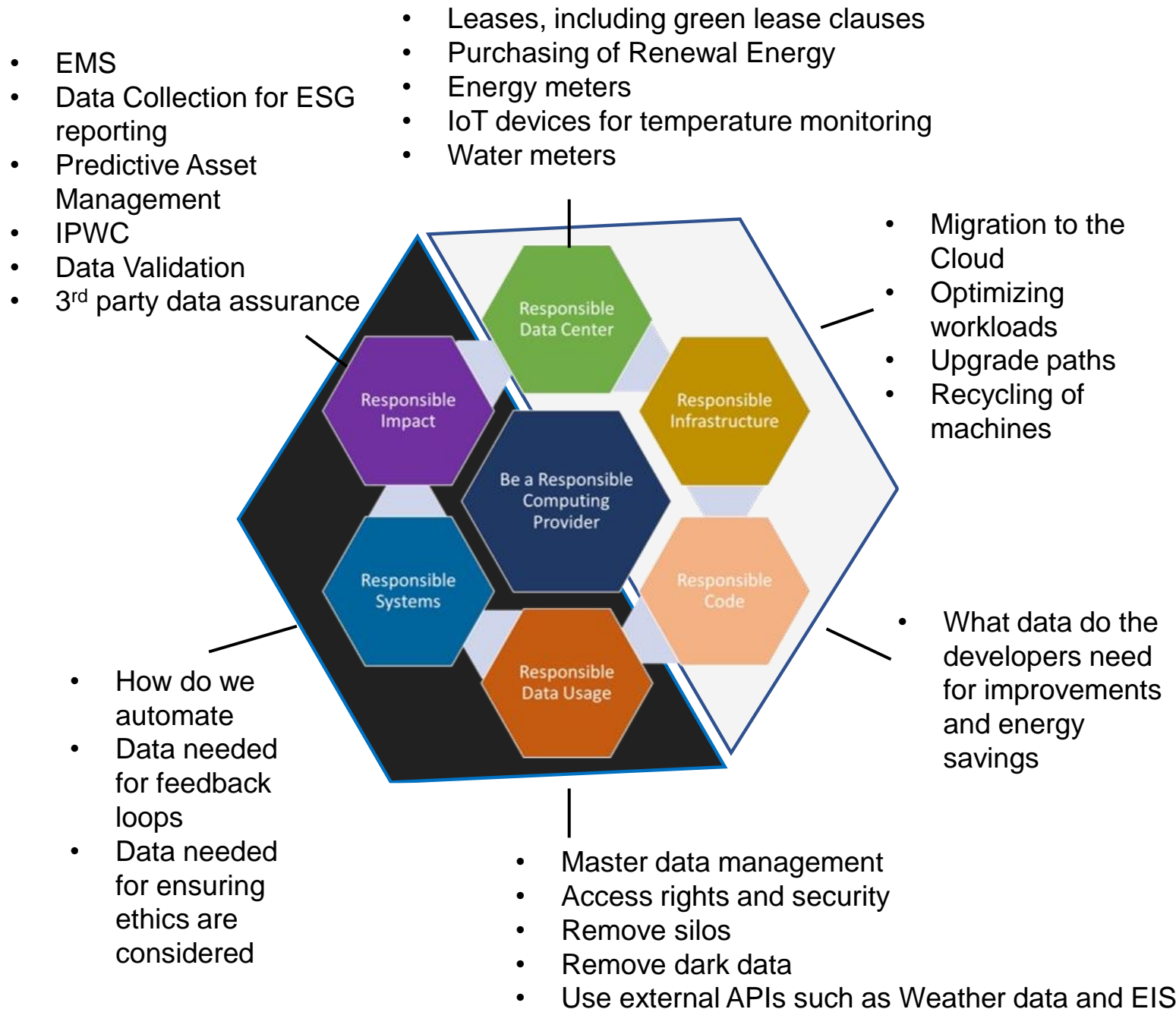
Difficult to track impact of environmental efforts

As a Project Manager what do you need to think about in this case?



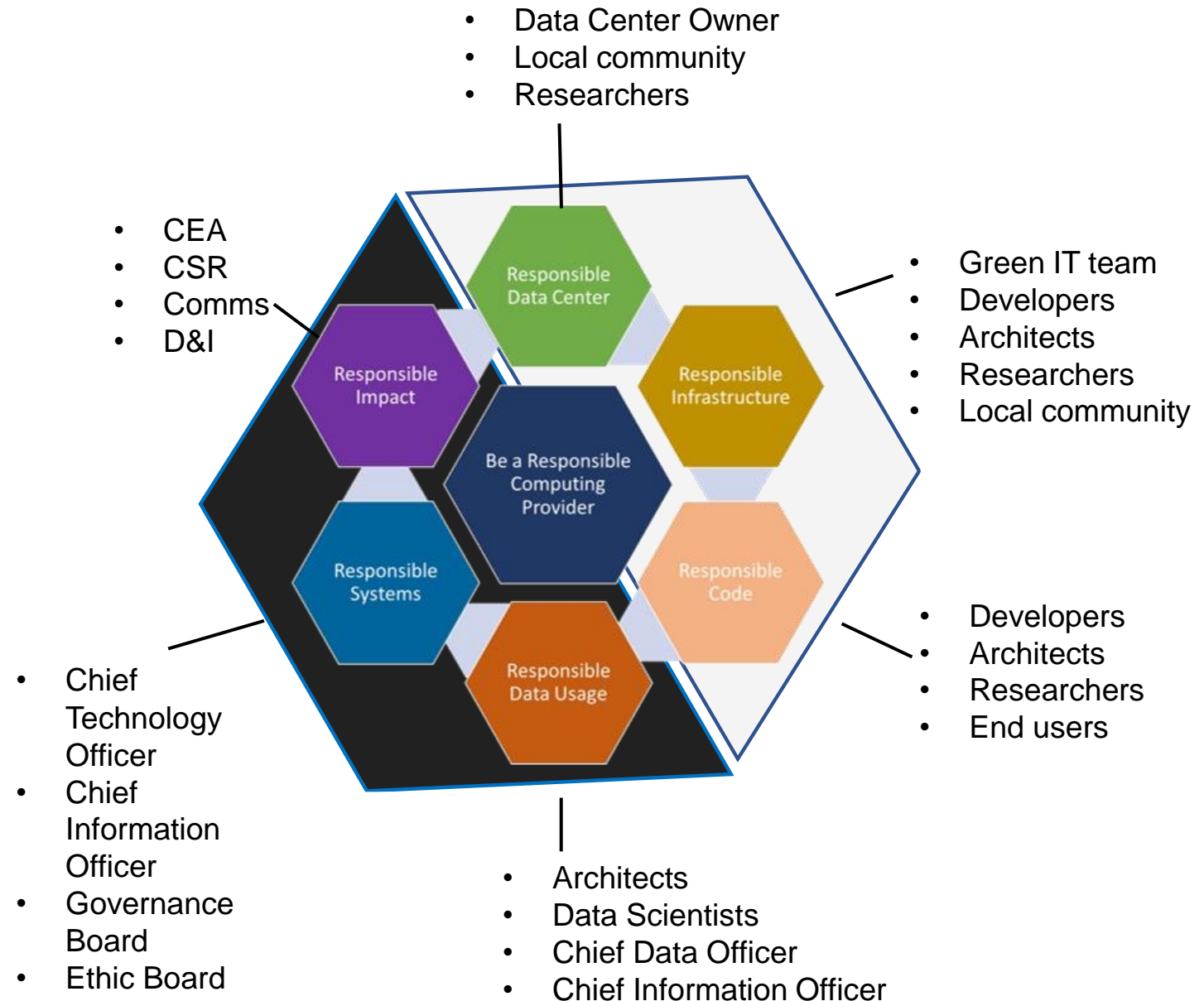
As a Project Manager what do you need to think about in this case?

What data will you need



As a Project Manager what do you need to think about in this case?

Who do you need to involve?

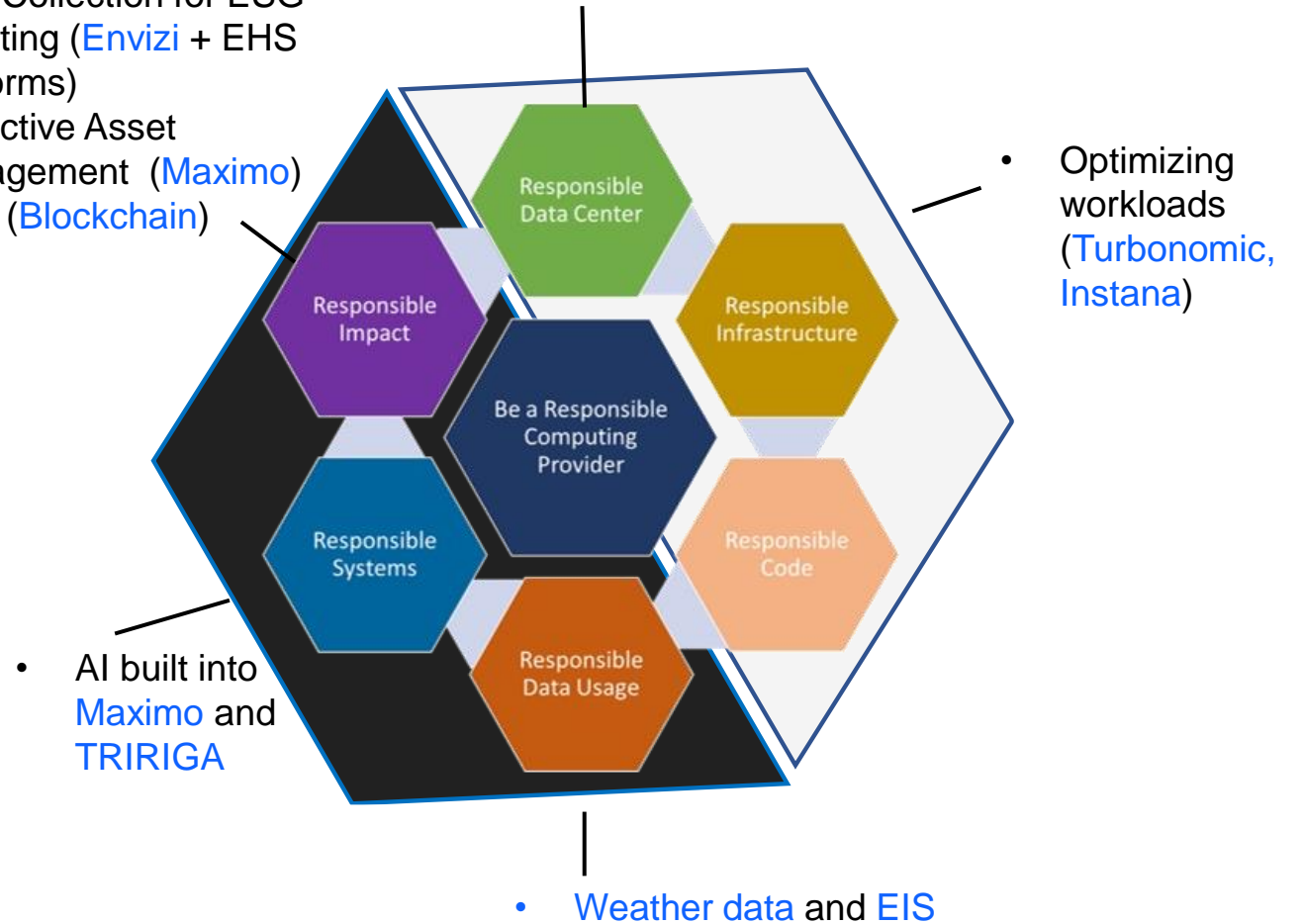


As a Project Manager what do you need to think about in this case?

What are the best tools?

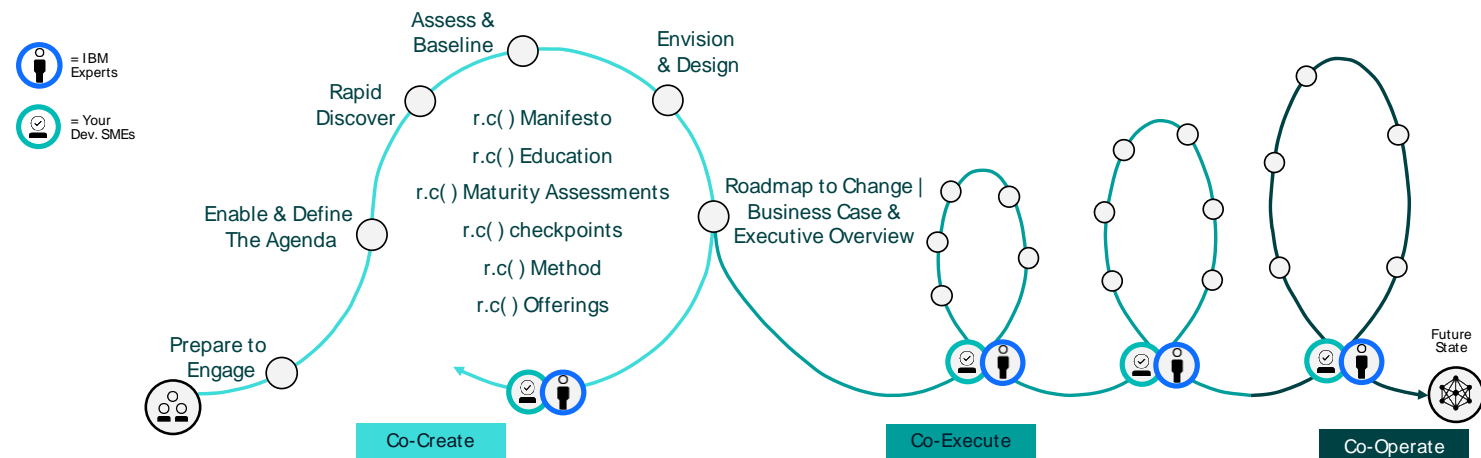
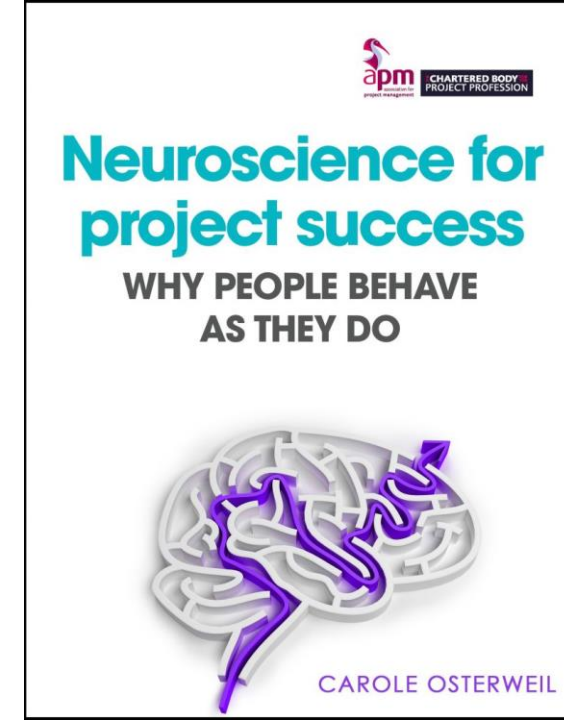
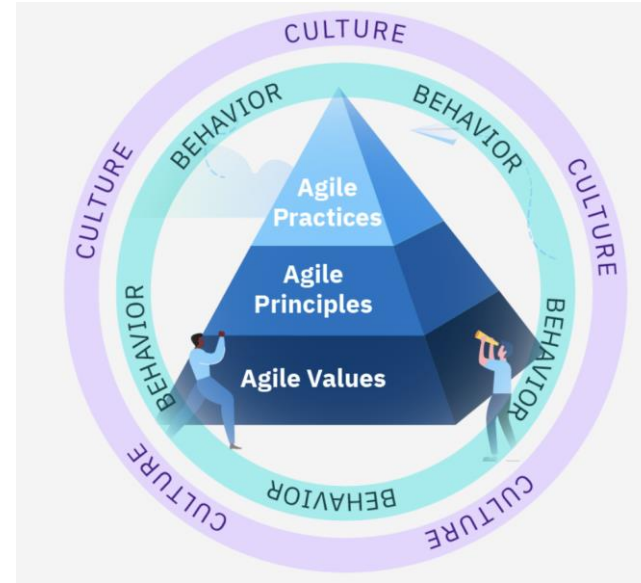
- Data Collection for ESG reporting ([Envizi](#) + EHS platforms)
- Predictive Asset Management ([Maximo](#))
- Trust ([Blockchain](#))

- Leases, including green lease clauses ([TRIRIGA](#))
- Purchasing of Renewal Energy
- Energy bills ([Envizi](#))
- Improve cooling (BMS)
- Water reduction ([Envizi](#))
- IoT devices for temperature monitoring ([MAXIMO](#))



As a Project Manager what do you need to think about in this case?

How to have high performing teams



Lessons Learnt

- 1.** You can start on any of the domains in this framework to help you towards your goals. All actions are good for the planet, but know what data you need for your goals. You cannot measure what you cannot see
- 2.** Focus on the data, ensuring you have master data management and data stewardship to ensure all terms mean the same across your tools and remove unnecessary data to allow better reporting and the ability to analyse your data and take appropriate actions
- 3.** Focus on clear roles, and responsibilities from data gatherers, data entry, and data verifiers, as data accuracy and data verification are key
- 4.** Use technology and automate where possible but check the automation to bring Trust and allow feedback loops and psychological safety