



PROMS-G
Project Management
Specialist Group

BCS PROMS-G Spring School March 2023

Week 2 16 March 2023

RPM and Project Case Studies



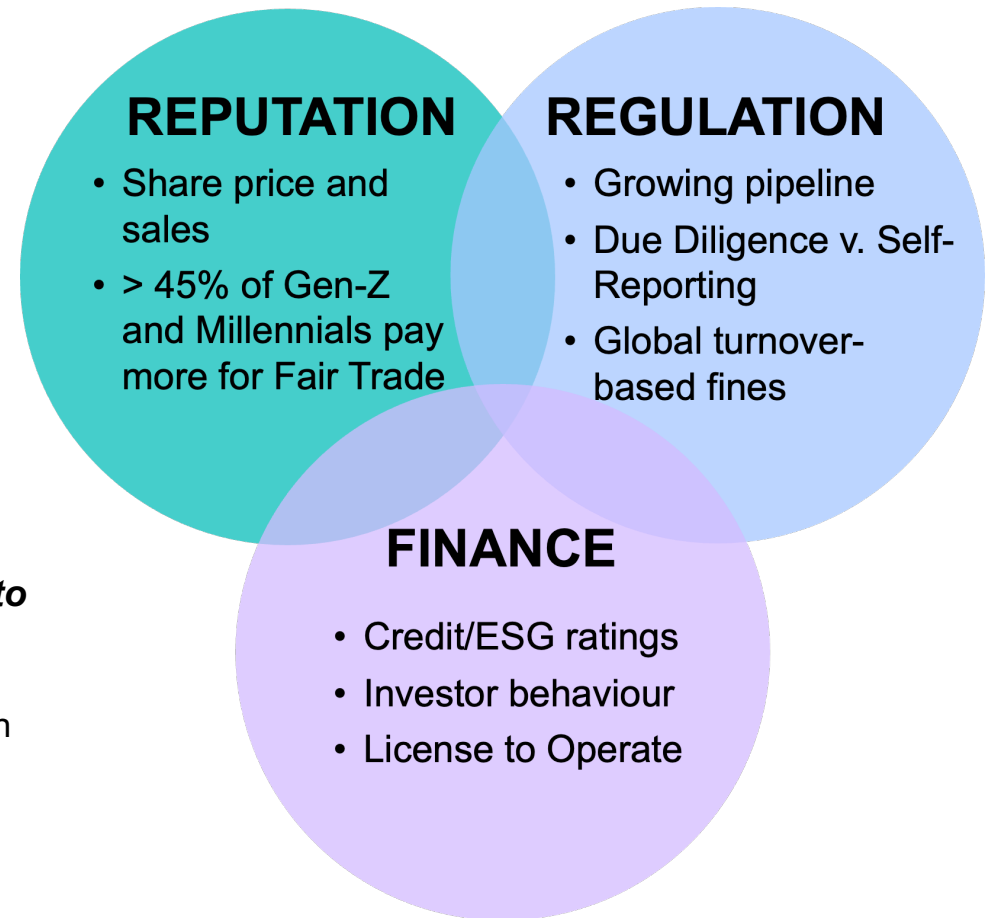
ETHICS – Empirical Transparency of Human Rights Issues in Commodity Supply Chains

James Stewart Principal Account Technical Leader

Organisations are acting now...

“We’ve moved from an obligation to report to an obligation to trace and to perform due diligence up to the nth tier of the supply chain”

Sustainable Sourcing Director – multinational CPG organisation



How ETHICS works...

How it Works

01 FILTER



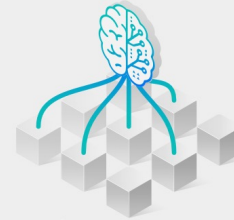
Identifies the supply chain and human rights data relevant to you, through scanning thousands of articles, reports and datasets from across a targeted ecosystem of NGOs news sites and data providers.

02 UNDERSTAND



Continually builds upon and updates complex AI Knowledge Models with understanding gained through NLP on the identified data. Data is assessed and scored for trustworthiness and credibility using a model that is constantly refined based on user feedback.

03 REASON



ETHICS' AI engine is trained to reason and infer like a human, analysing the ever-growing knowledge base to identify new entities, relationships and links in the AI Knowledge Models. ETHICS' ability to surface insight linking primary and secondary risks to your supply chains grows as more data, data sources, and peer organisations join the platform.

04 VISUALISE



View and explore the organisations in your supply chain and any possible human rights risks associated to them. Understand and explore the credibility and provenance of risks to support risk mitigation decision-making.

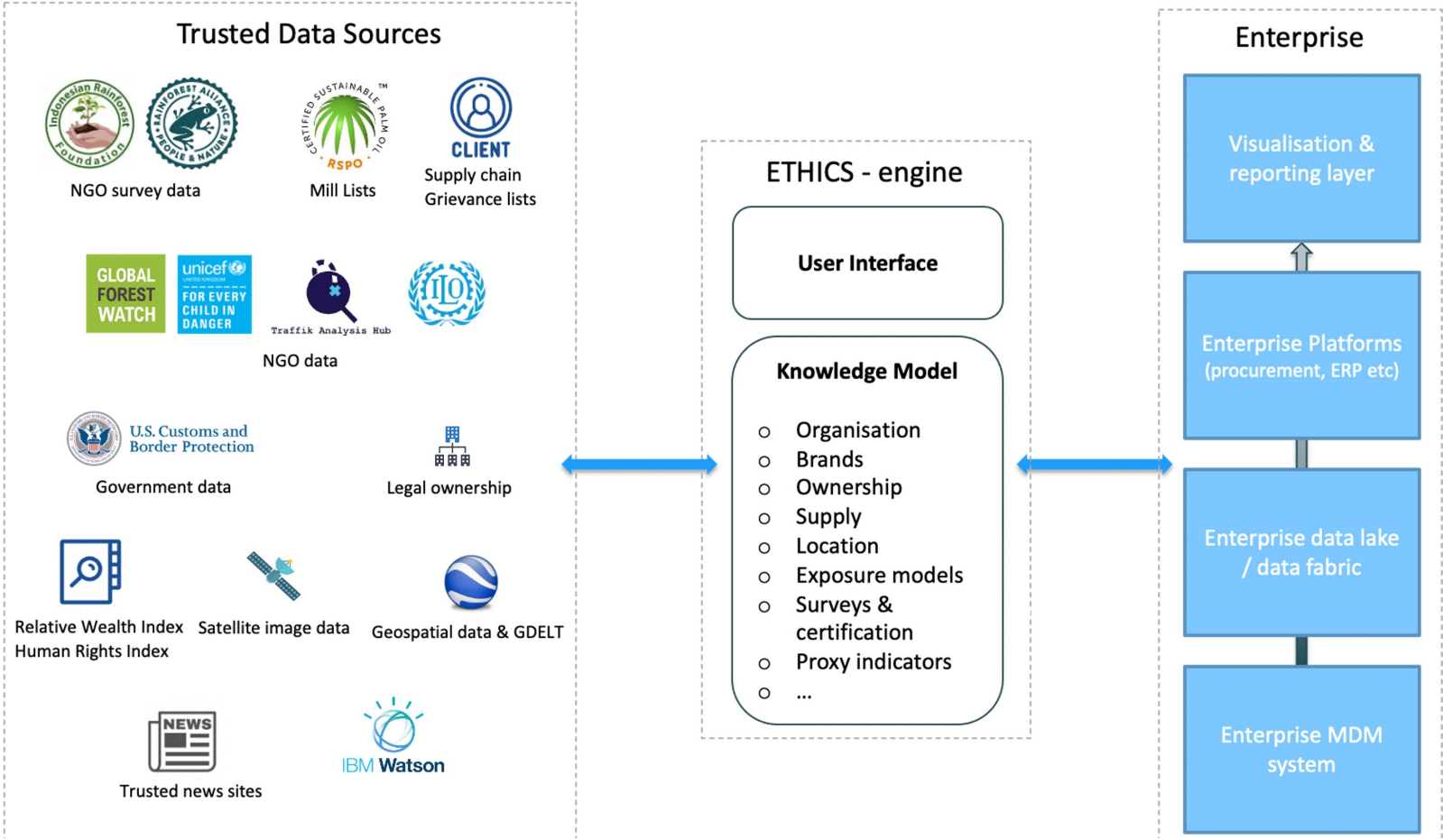
05 ACT



Act to help impacted communities through ETHICS' ecosystem partnership with Stop the Traffik, engaging their available ETHICS services and harnessing their deep domain expertise and well-established local networks to both address exposures and to build preventative measures.

Data...

Examples – not exhaustive



Demo

ETHICS Supplier Risk Analysis

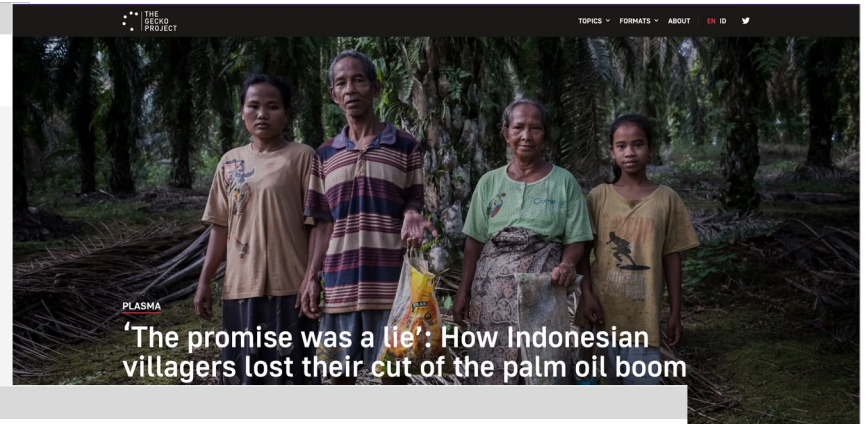
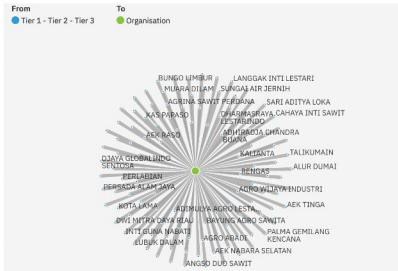
[Home](#)

Supplier Detail

Organisation	Organisation Type	Parent Company	Ownership Risk
[Redacted]	kernel-crushing-plant, legal-entity, refinery	[Redacted]	
[Redacted]	kernel-crushing-plant, legal-entity, refinery	[Redacted]	

* Grievance reports provided do not have NLP details available - please see grievance report for more information
 * Secondary Risk Exposures do not have risk levels associated
 * Risk Levels do not indicate severity of risk and are a calculated using NLP confidence and data source weightings

Risk Level	Exposure	Risk Exposure	NLP Score	Risk Date	Source	Processing Date	NLP Breakdown
NA	Forced Labour	Secondary Risk	0.72	2022-05-23	https://thegeckoproject.org/articles/the-promise-was-a-lie-how-indonesian-villagers-lost-their-cut-of-the-palm-oil-boom/	30 January 2023	View
NA	Forced Labour	Secondary Risk	0.91	2021-07-13	https://news.mongabay.com/2021/07/top-brands-falling-to-spot-rights-abuses-in-indonesian-oil-palm-plantations-rspo/	30 January 2023	View
NA	Forced Labour	Secondary Risk	0.67	2021-06-15	https://www.forestpeoples.org/en/private-sector/press-release/2021/media-release-new-report-documents-multiple-human-rights-abuses	30 January 2023	View
NA	Labor	Secondary (Non-Compliance)		2021-06-01	Internal Grievance Report	21 February 2023	View
NA	Forced Labour	Secondary Risk	0.87	2020-11-26	https://urdefense.proofpoint.com/v2/url?url=https://3A_palmoilabour.network_labour-2Drights-2Dviolation-2Din-2Dthe-2Dglobal-2Dsupply-2Dchain-2Dof-2Dthe-2Dpalm-2Doil-2Dindustry-2D2_&deDwFAg&cs=_jaSHvJObTbx-sIAZQg&r=oa0Z_D09GzVZCvE6UyUhcPk6IaRelZ-7kjlXrc&m=bzh_-d7AvnxVn47q0PmlSFkxwO54BEIBZTXXNBsoFlk1DjWgmpzVWH03tOnbsA&s=LxHVMScRqSrGehEz&k7m9pxP17X13X5FPrm2sUnXGEY&e="	30 January 2023	View



ETHICS Supplier Risk Analysis

[Back](#)

NLP Breakdown

Organisation	Article
[Redacted]	62_1655695509_1999629

Organisation : 15

Exposure : 17

Exposure	Location
CASUAL STATUS	
CHEMICAL FERTILIZERS	
CHILD LABOUR	BOVEN DIGGEL 1
DEDUCTED FROM THEIR INCOME	EAST KALIMANTAN 1
EXPLOITATION	KUTAI KARTANEGARA 1
EYE AND SKIN IRRITATION	
FORCED EXPULSION	
FORCES WORKERS	MEDAN 1
FORCIBLY EXPELLED	
HEAVY WORKLOAD	MUST RAWAS 1
NO PAID LEAVES	
NO PAID MENSTRUAL AND PARENTAL LEAVE	
PESTICIDES	SAMARINDA 1
PIECE-RATE WAGE SYSTEM	
POOR HEALTH AND SAFETY	SUMSEL 1
POOR WORKING CONDITIONS	
WITHOUT PROPER AND EFFECTIVE PPE	

Location : 7

Considerations

