

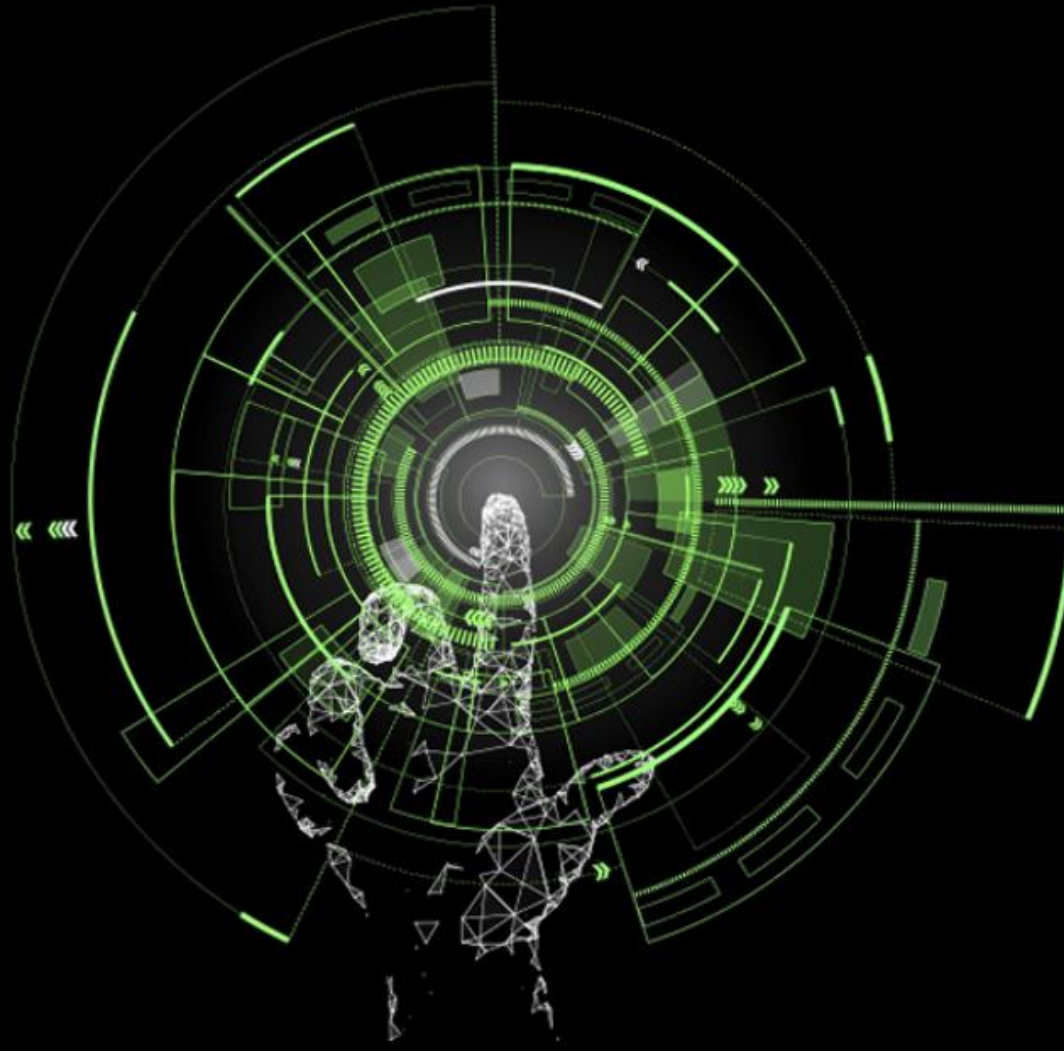


**British Computer Society**  
**The Chartered Institute for IT**  
**Consultancy Specialist Group**

**Webinar**

**Current and future developments  
of the IT consultancy profession  
by Rebecca George OBE CITP FBCS  
18<sup>th</sup> February 2021**





## IT Consultancy Profession – Current and Future

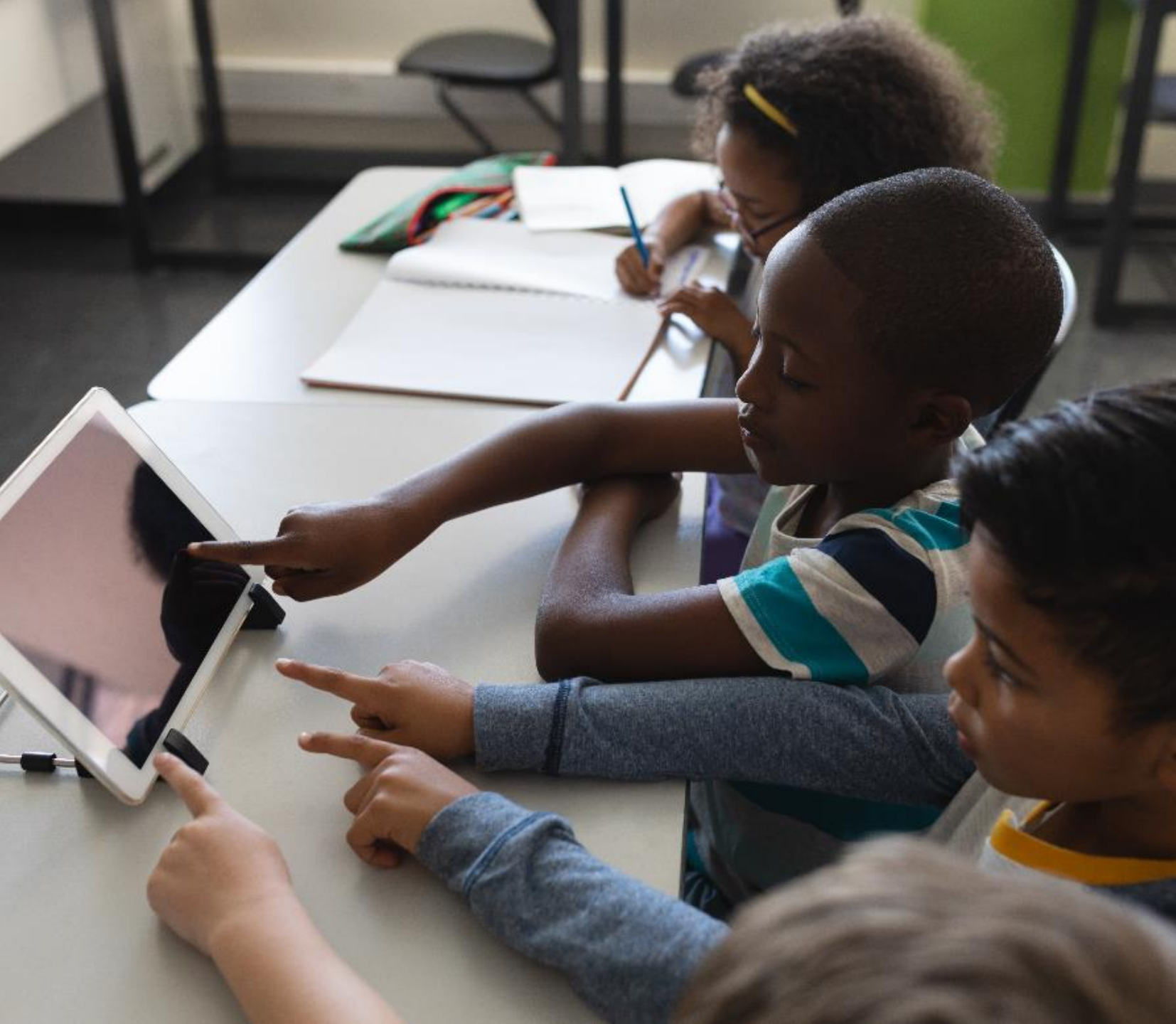
Rebecca George OBE President, BCS – Chartered Institute for IT

The COVID-19 pandemic has provided us with a shared global experience that has fundamentally challenged our traditionally received wisdom in every aspect of our society.



According to BCS analysis, black women are severely under-represented and make up just 0.7% of the IT sector, a representation 2.5 times worse than for other industries





Technology and access to it should now be seen as a utility requirement, as fundamental to our lives as water and electricity

55% of UK workers believe that their colleagues are just as, if not more, productive now working from home than before the lockdown was first imposed





Leaders must listen sensitively to their teams to ensure they are working in a way that supports their day-to-day role

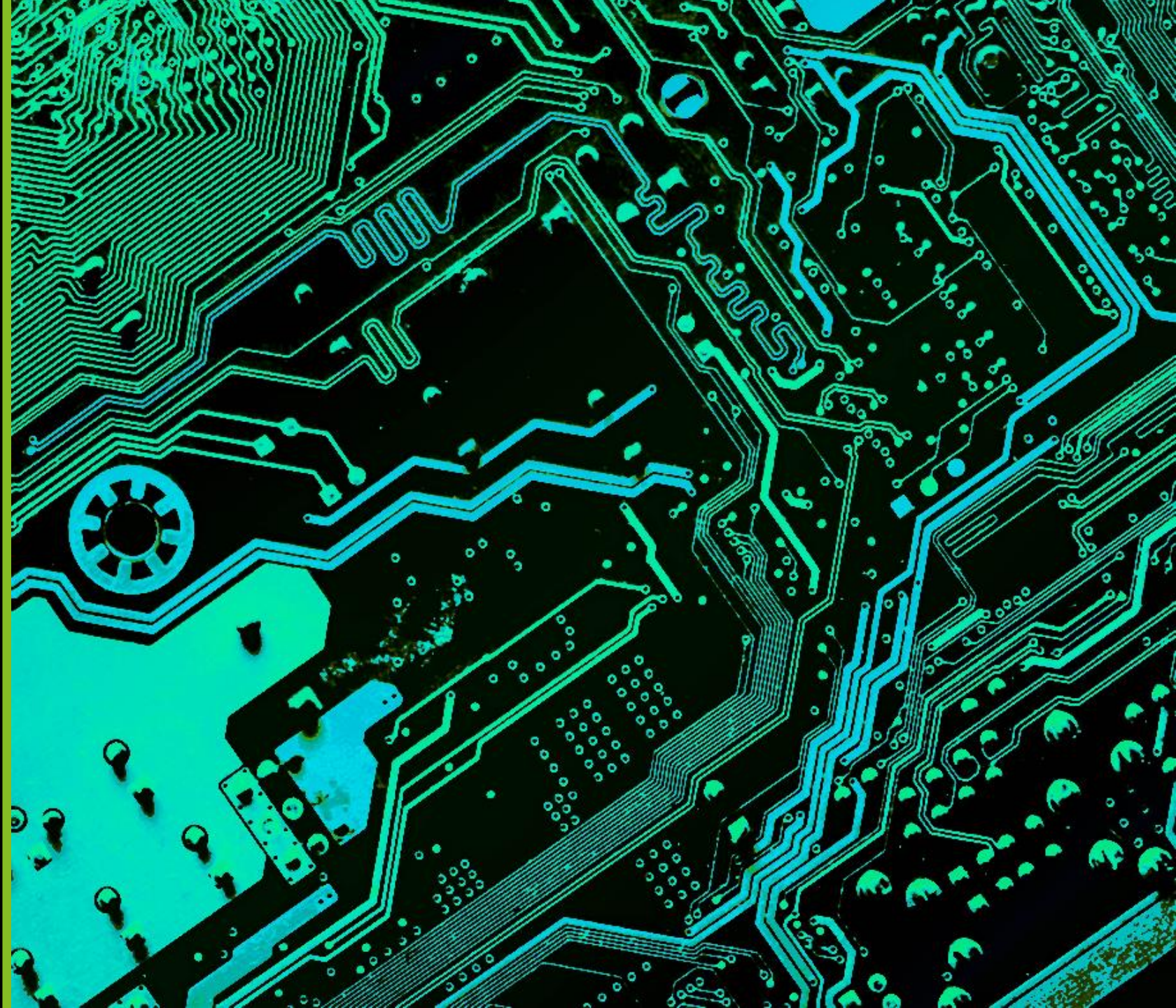


The traditional consultancy model is based on building strong relationships and working alongside your client to help fix their problems....

How will this work in the future ?



COVID's societal  
impact has  
accelerated and  
shaped agendas  
that impact the  
digital conversation.





'Consulting leaders expect the industry to grow by 9% in the next 12 months with the greatest area of growth in digital technology- highlighting the critical importance of the sector in the economic recovery and urgent digital transformation of UK businesses'



This publication has been written in general terms and we recommend that you obtain professional advice before acting or refraining from action on any of the contents of this publication. Deloitte MCS Limited accepts no liability for any loss occasioned to any person acting or refraining from action as a result of any material in this publication.

Deloitte MCS Limited is registered in England and Wales with registered number 03311052 and its registered office at Hill House, 1 Little New Street, London, EC4A 3TR, United Kingdom.

Deloitte MCS Limited is a subsidiary of Deloitte LLP, which is the United Kingdom affiliate of Deloitte NSE LLP, a member firm of Deloitte Touche Tohmatsu Limited, a UK private company limited by guarantee ("DTTL"). DTTL and each of its member firms are legally separate and independent entities. DTTL and Deloitte NSE LLP do not provide services to clients. Please see [www.deloitte.com/about](http://www.deloitte.com/about) to learn more about our global network of member firms.

© 2021 Deloitte MCS Limited. All rights reserved.