



Trisotech

Modelling the Preoperative Surgical Journey

An introduction to Business Process Management for
Healthcare (BPM+ Health)

Dr. John Svrbely

Chief Medical Informatics Officer (CMIO),

Denis Gagne

Chief Executive Officer (CEO),

Abstract

- This webinar will provide an introduction to BPM+ using the preoperative surgical journey as an example.
- Our speakers will demonstrate visual modelling and automation for the preoperative surgical journey based on the three open standards that make up BPM+.
- BPM+ Health is a multidisciplinary initiative, with high levels of participation from clinicians, to improve the quality and consistency of healthcare delivery. It is achieving this by applying business process modelling standards to clinical best practices, care pathways and workflows directly at the point of care.
- Further information on BPM+ Health can be found at <https://www.bpm-plus.org>



Intro to BPM+

Marrying OMG and HL7 standards



Some Basic Terminology



Workflow Automation

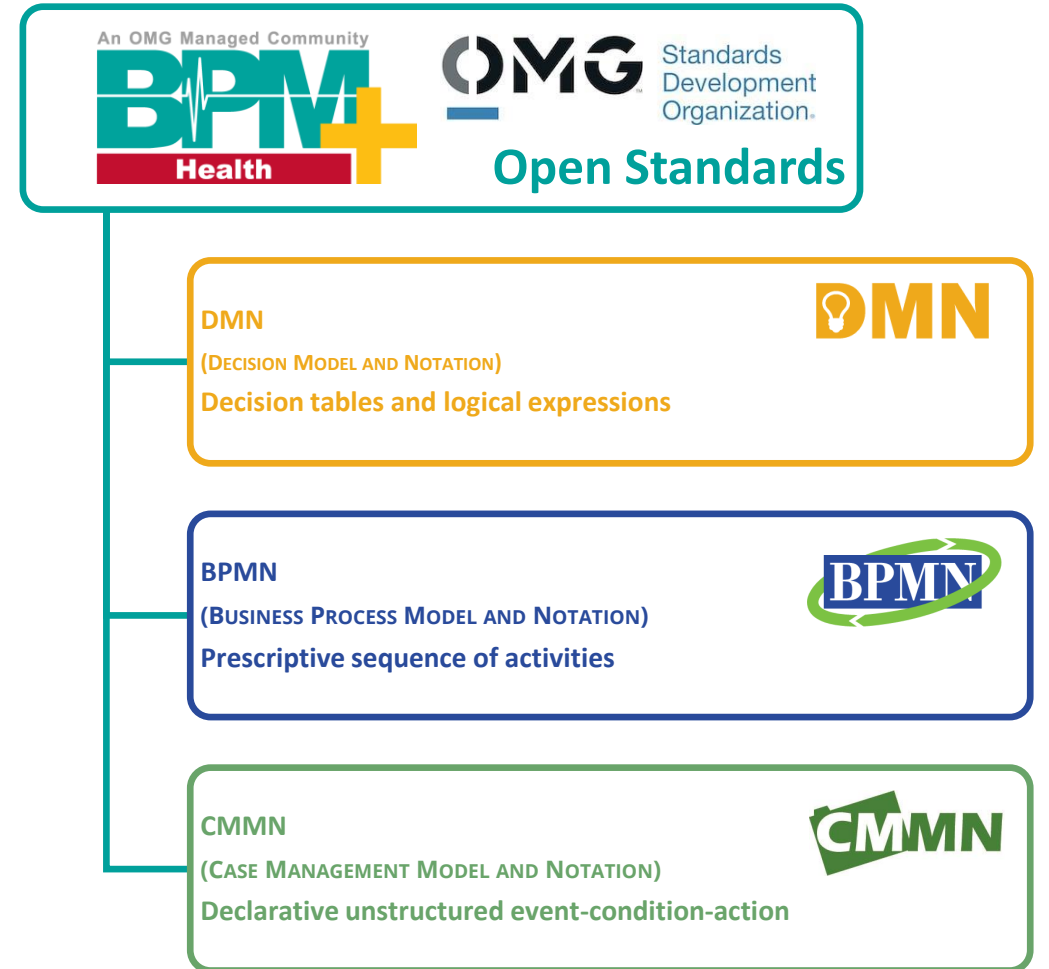
Technology enabled orchestration of activities, able to react to business events.



Decision Automation

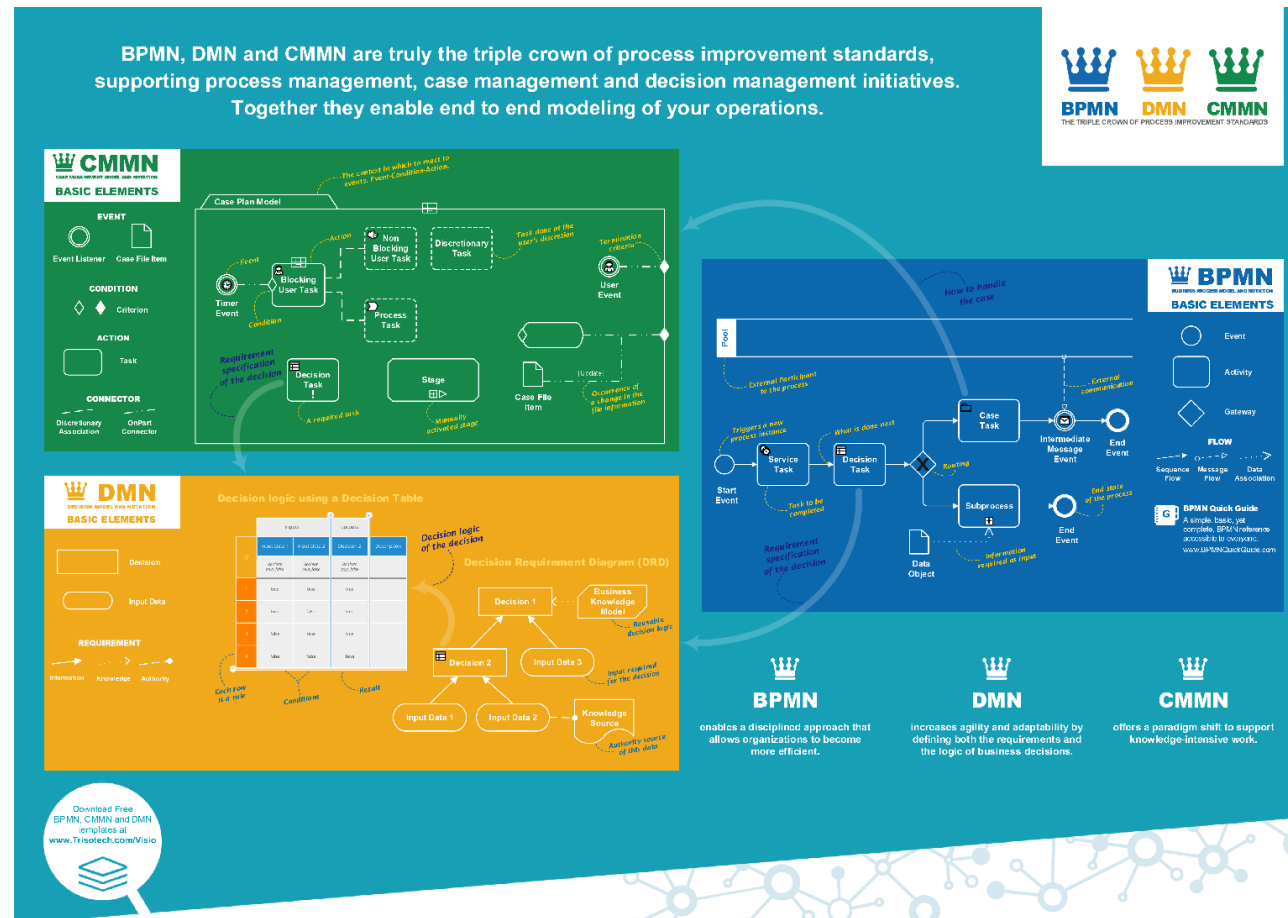
Technology enabled decisions, returning answers given some inputs.

Both may have humans in the loop or not.
(Referred to as Knowledge Workers.)



Visual Drag and Drop Paradigm

BPM+

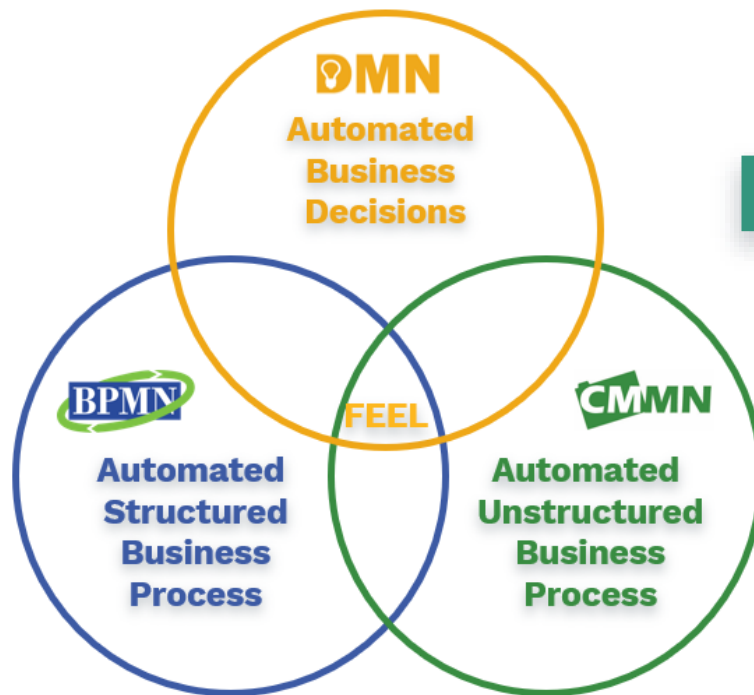


Trisotech is a global leader in digital enterprise solutions, offering innovative and easy-to-use software tools that allow customers to discover, model, analyze and find insights into their digital enterprise.

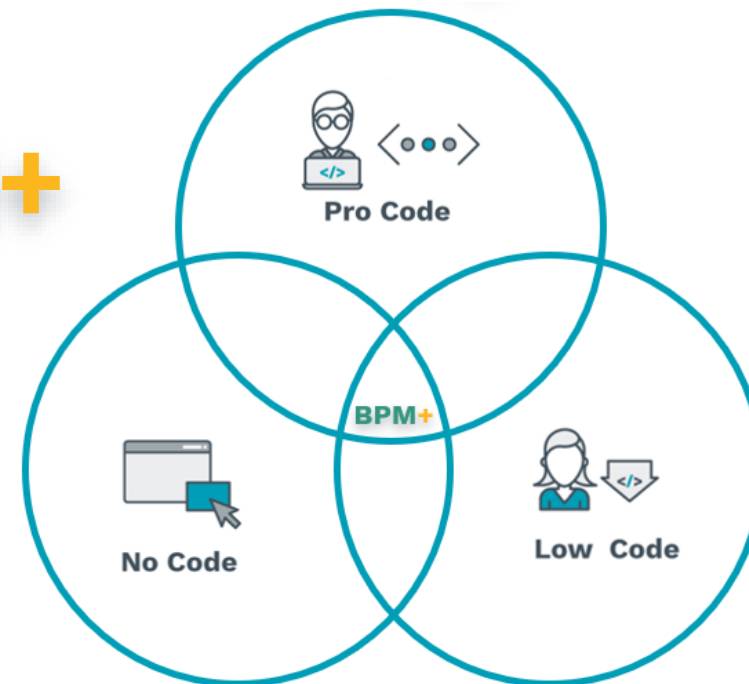
Trisotech
Where strategies come to life!
www.trisotech.com

The best of all worlds!

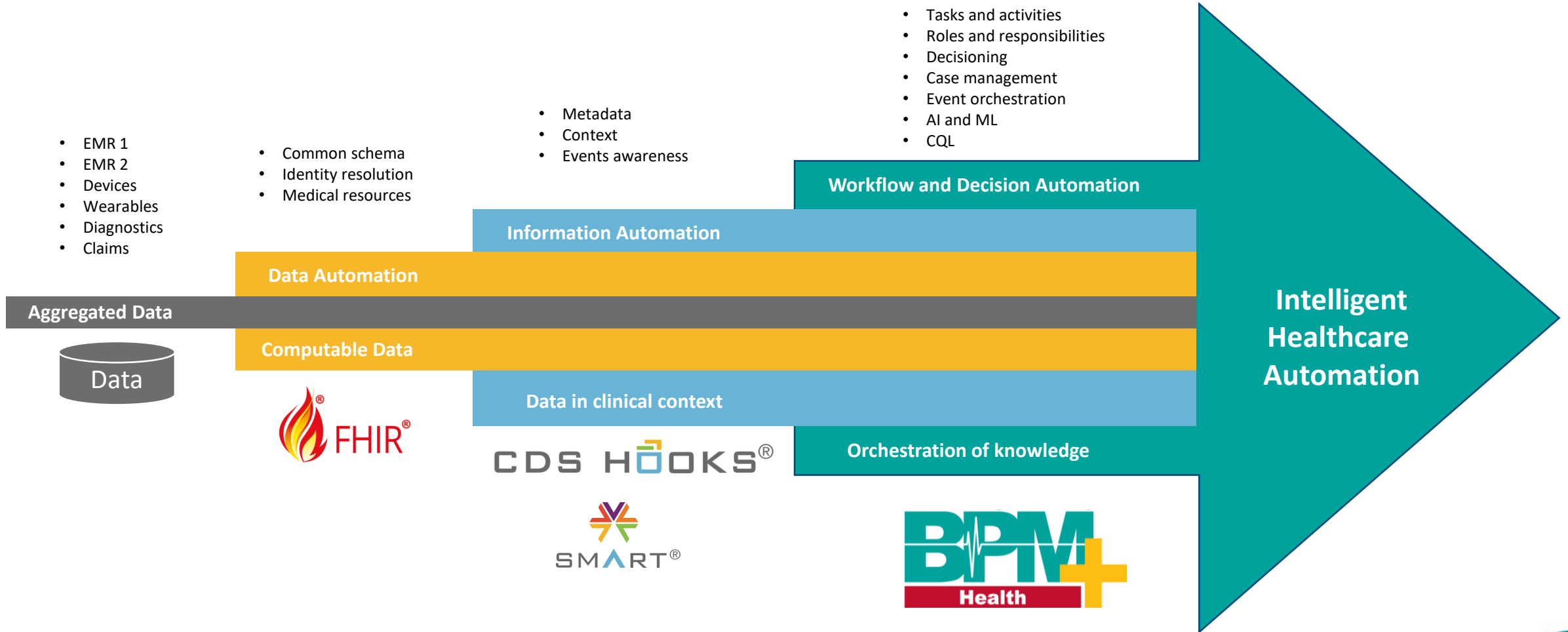
FEEL and BPM+ together offer a powerful environment that brings Low Code, No Code and even Pro Code development paradigms together



BPM+



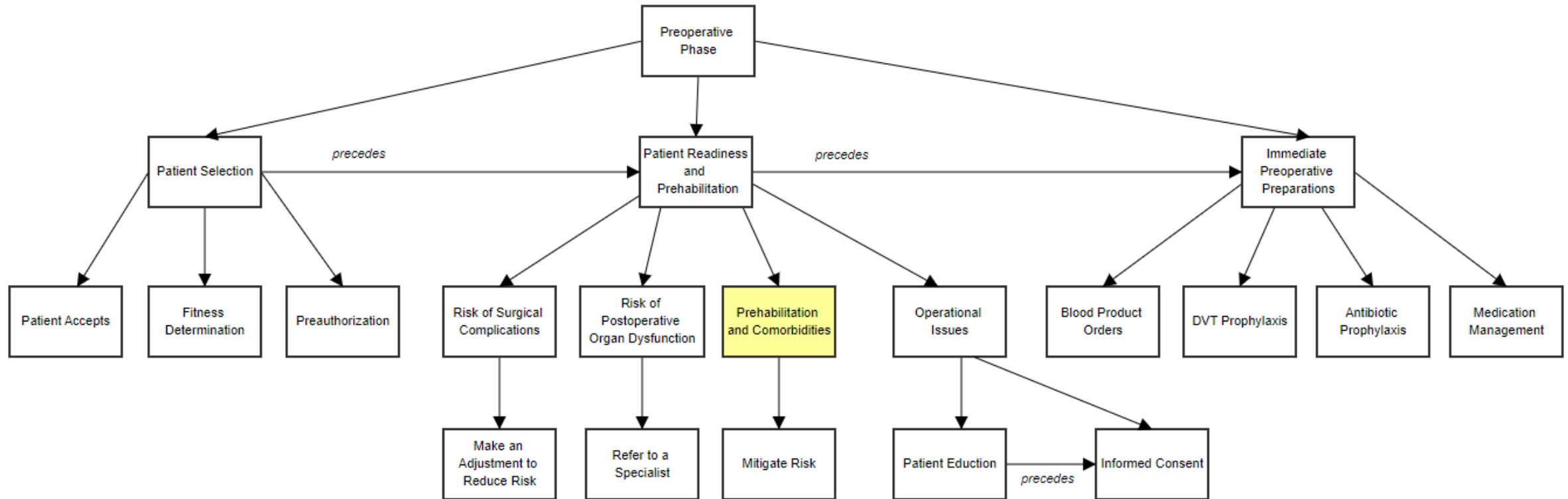
BPM+ Value Add



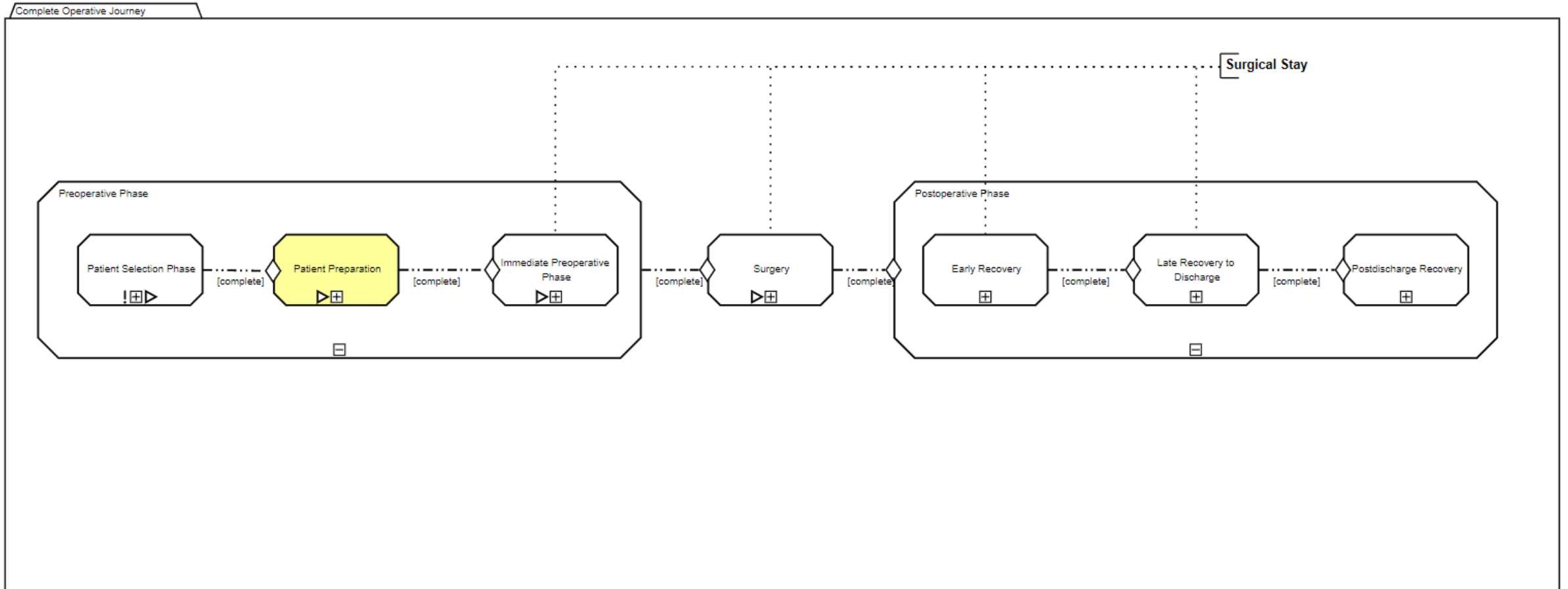


Example: The Preoperative Journey

Concept Map for Preoperative Processes



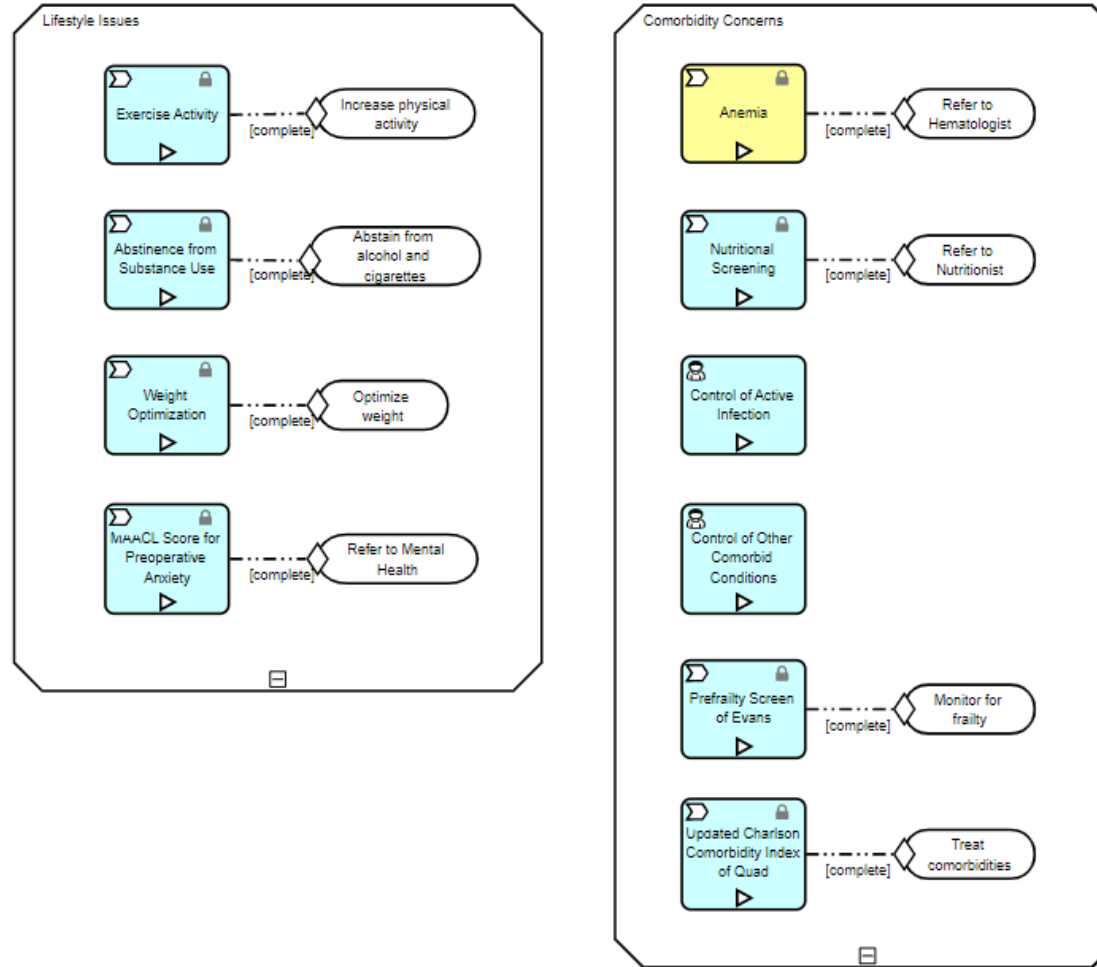
Elective Operative Journey



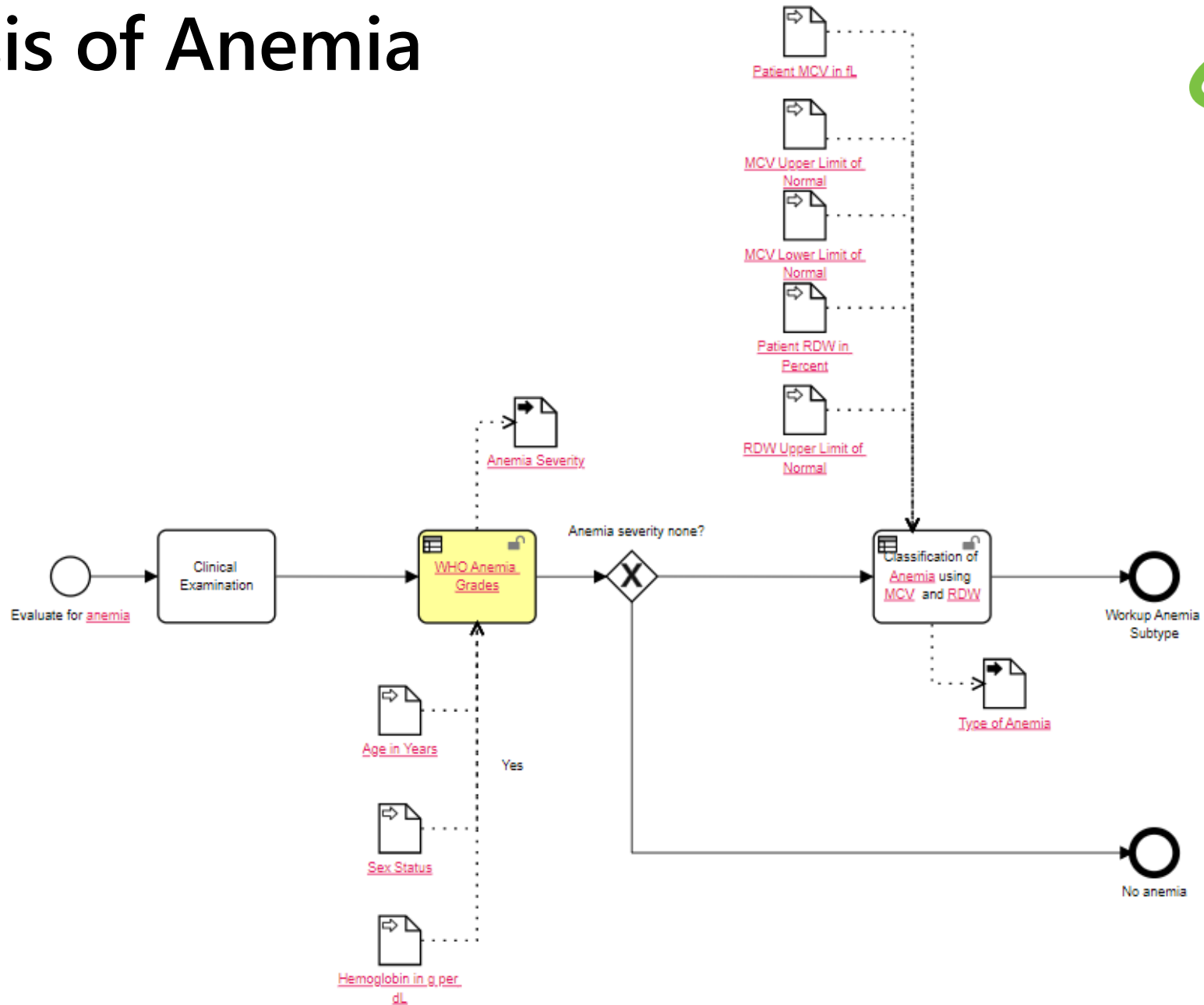
Prehabilitation and Comorbidities



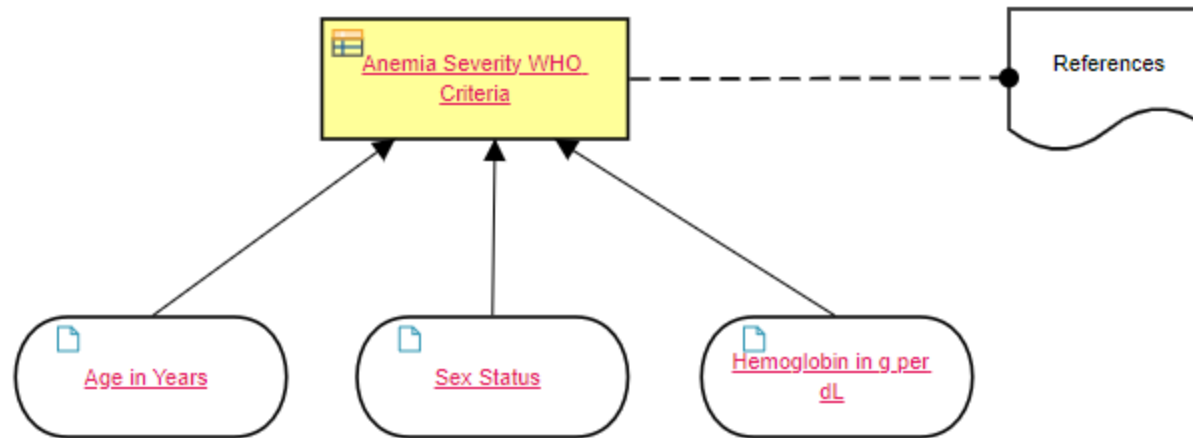
Prehabilitation of Comorbidities



Diagnosis of Anemia



Anemia Severity WHO Criteria



Anemia Severity WHO Criteria



Anemia Severity WHO Criteria

tAnemiaWHO

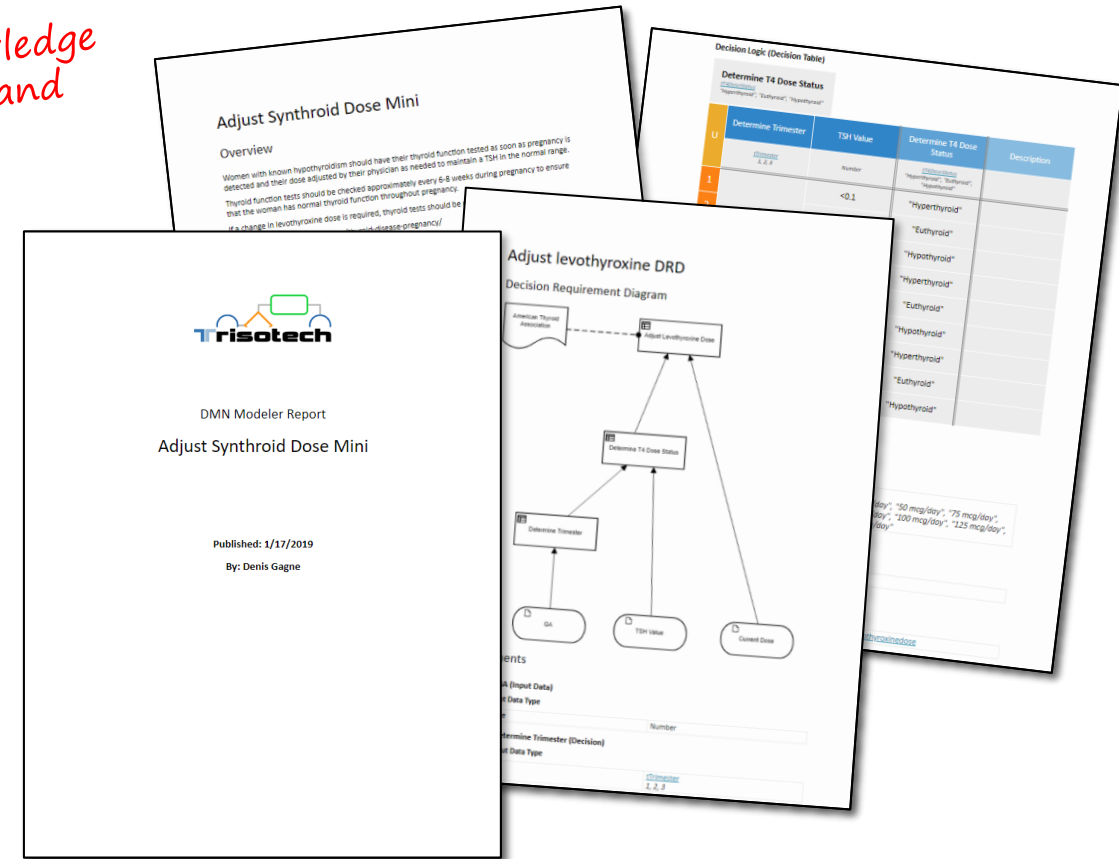
"None", "Mild", "Moderate", "Severe"

U	Age in Years	Sex Status	Hemoglobin in g per dL	Anemia Severity WHO Criteria	Description
	<i>tAge</i> [0.5..125]	<i>tSex</i> "Male", "Female nonpregnant", "Female pregnant"	<i>tHgb</i> [0..50]	<i>tAnemiaWHO</i> "None", "Mild", "Moderate", "Severe"	
1	[0.5..5)	-	>=11	"None"	
2	[0.5..5)	-	[10..11)	"Mild"	
3	[0.5..5)	-	[7..10)	"Moderate"	
4	[0.5..5)	-	<7	"Severe"	
...					
19	>=15	"Female pregnant"	[7..10)	"Moderate"	
20	>=15	"Female pregnant"	<7	"Severe"	
21	>=15	"Male"	>=13	"None"	
22	>=15	"Male"	[11..13)	"Mild"	
23	>=15	"Male"	[8..11)	"Moderate"	
24	>=15	"Male"	<8	"Severe"	

BPM+ Guideline Models

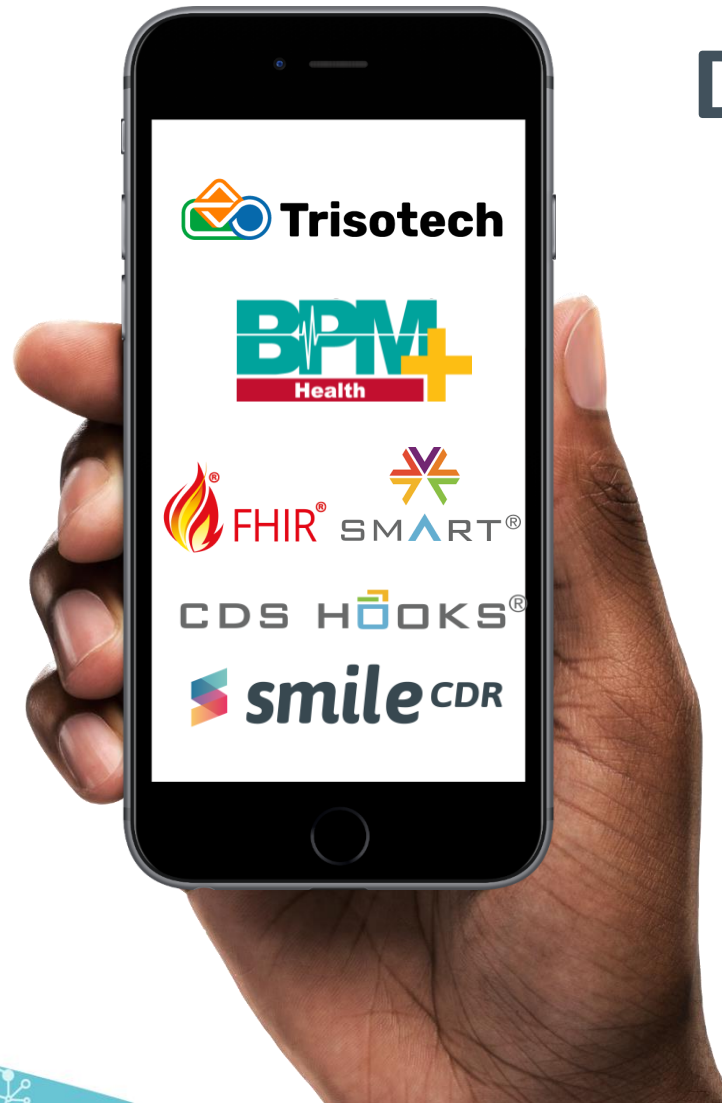
Created
by clinicians
for clinicians

*** A single visual Knowledge
Artefact for clinicians and
for automation*



- The model is the guideline specification.
- The model is the guideline logic.
- The model is the guideline documentation.
- The model is the guideline automation code.

Demo



Dr. John Svirbely, MD

Chief Medical Informatics Officer (CMIO),
jsvirbely@Trisotech.com

Denis Gagne

Chief Executive Officer (CEO),
dgagne@Trisotech.com

Any questions?

THANKS!

