



Taming the Wild Child of SCM

Using Git in the Enterprise

Kirsty Burgess, Software Configuration Manager
BCS CMSG Conference – 10th June 2014



Using Git in the Enterprise

- What is Git?
- Why did we move to Git?
- What did we have to change?
- Where are we now?



What is Git?

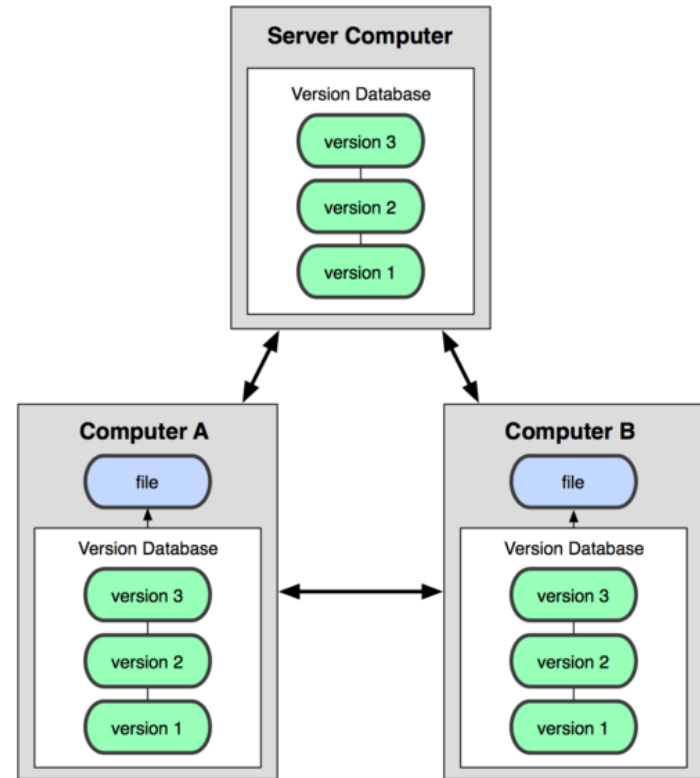
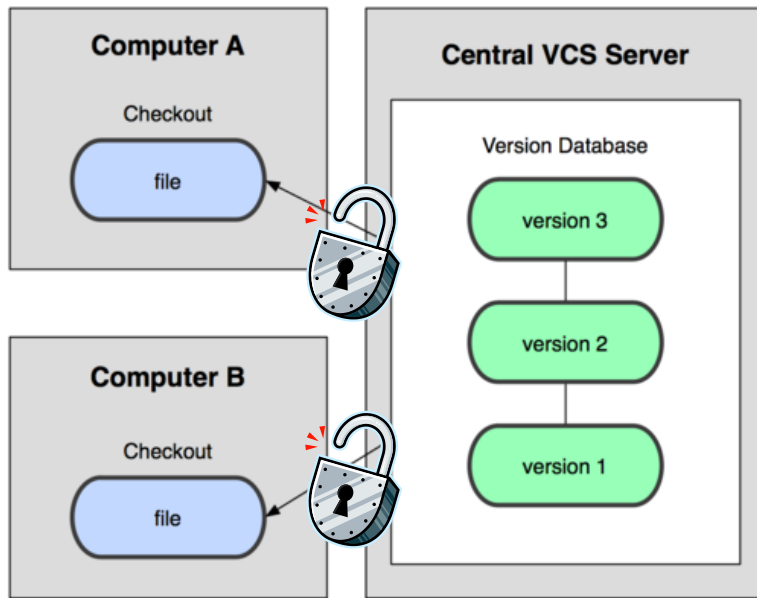


- Open Source
- Distributed version control system (DVCS)
- Developed by Linus Torvalds and launched in 2005
- Key requirements:
 - Speed
 - Simple
 - Scalable
 - Supports non linear development
 - Distributed



Met Office

Centralised v Distributed VCS





Why did we move to Git?

- Developer driven!
 - Unhappy with current version control software
 - Wanted industry standard tool
- Subversion and Git were both trialled by the same development team
- Git won – just!
 - Longer future
 - Solved branching problems
 - Street cred!
- Trials of both version control management tools were initiated and run by development teams – we needed to play catch up!



Welcome to Git

Security – what security?!

Where did our trusted server go?!

No formal/regular back up of repositories

No change control

No branching strategy

New concepts

Where will our other “stuff” live?

We've lost control!



New tool – repository manager

Security – what security?!

Where did our trusted server go?!

No formal/regular back up of repositories

No change control

Atlassian

 **Stash**

No branching strategy

New concepts

When will you other
it live?



Met Office

New tool – issue tracking

~~Security – what security?!~~

~~Where did our trusted server go?!~~

Atlassian



~~No formal/regular use of repositories~~

No change control

No branching strategy

New concepts

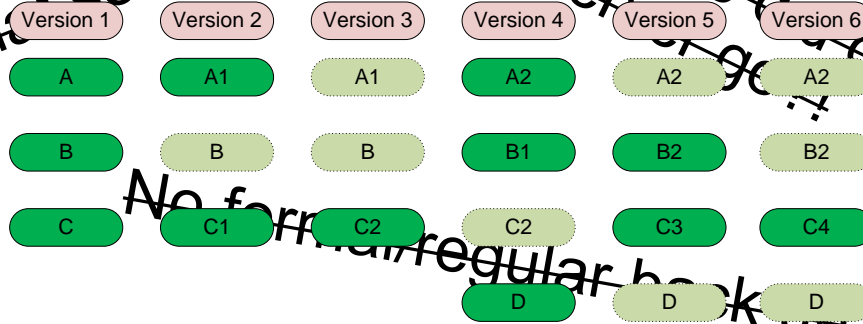
Where will our other “stuff” live?



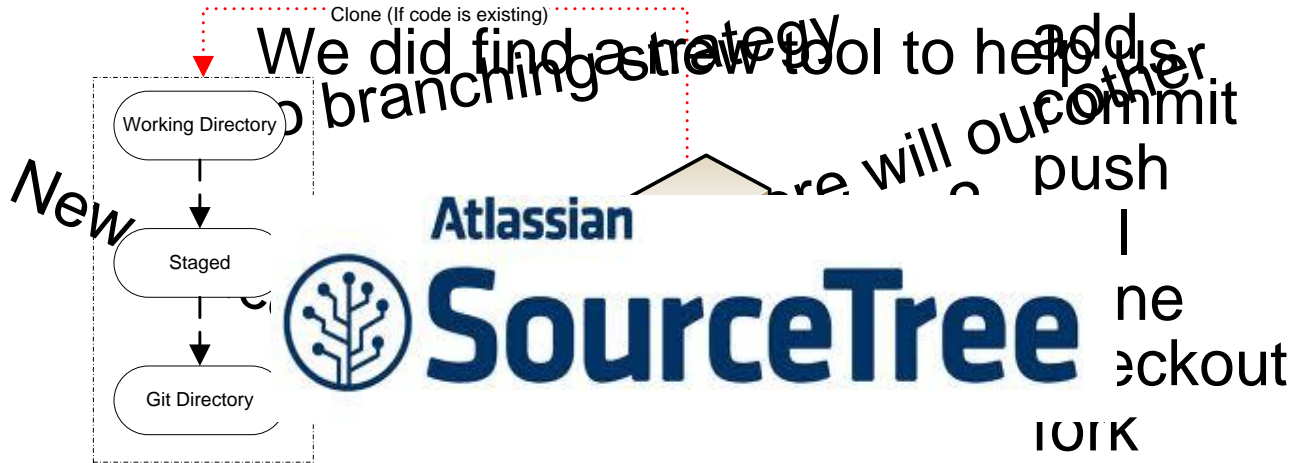
Met Office

Learning curve

Git stores data as a snapshot of the file system



No change operations done locally, with new terminology





Met Office

New process – branch/merge



Git Flow branch/merge model



Met Office

We still don't have all the answers
But we have some ideas . . .

~~Security - what security?!~~

~~Where did our trust
server go?~~

artifactory



Alfresco™

~~Journal/regular back up or repositories~~

~~No change control~~

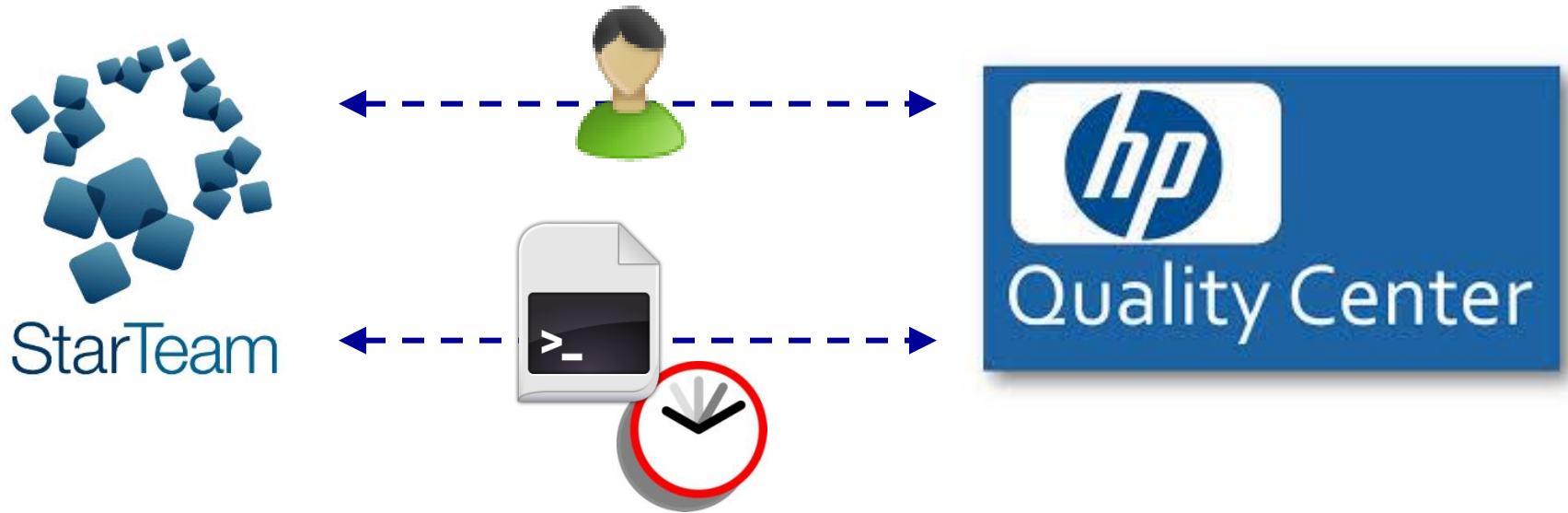
~~No branching strategy~~

~~New concepts~~

~~Where will our other
"stuff" live?~~



Where we were 18 months ago



Met Office “Integrated” Toolset



And now . . .

Met Office



artifactory

maven



Jenkins

1100
1010
0101

Atlassian



Atlassian



git

sonarqube

Atlassian



Met Office Integrated Toolset



Questions?