



Learning & Development Specialist Group

Enabling the
information society



Kevin Tibbs Director
Assess Management Ltd

Agenda

Concept Overview

How it will work

What the output looks like

Where would it fit

What the benefits are



Enabling the information society



The Open University



Learning & Development
Specialist Group

Enabling the
information society

The team



Certified SFIA consultants

Experience in commercial and academic learning

Examination process expertise

Experience of and involvement with professional bodies

Membership of BCS, Learning Performance Institute...

Project management & HR expertise

Authors are all BCS CITP Members



Question banks

BUAN

REQM

BUAN

PRMG

ASUP

DLMG

RLMT

SPIM

DESN

PGPG

SINT

SURE





Business Analyst

Main competency group: Business change
Senior practitioner upwards

Skills level range: (SFIA levels 3 to 6)

Role overview

A business analyst is accountable for identifying business needs, capturing requirements and determining solutions to business problems.

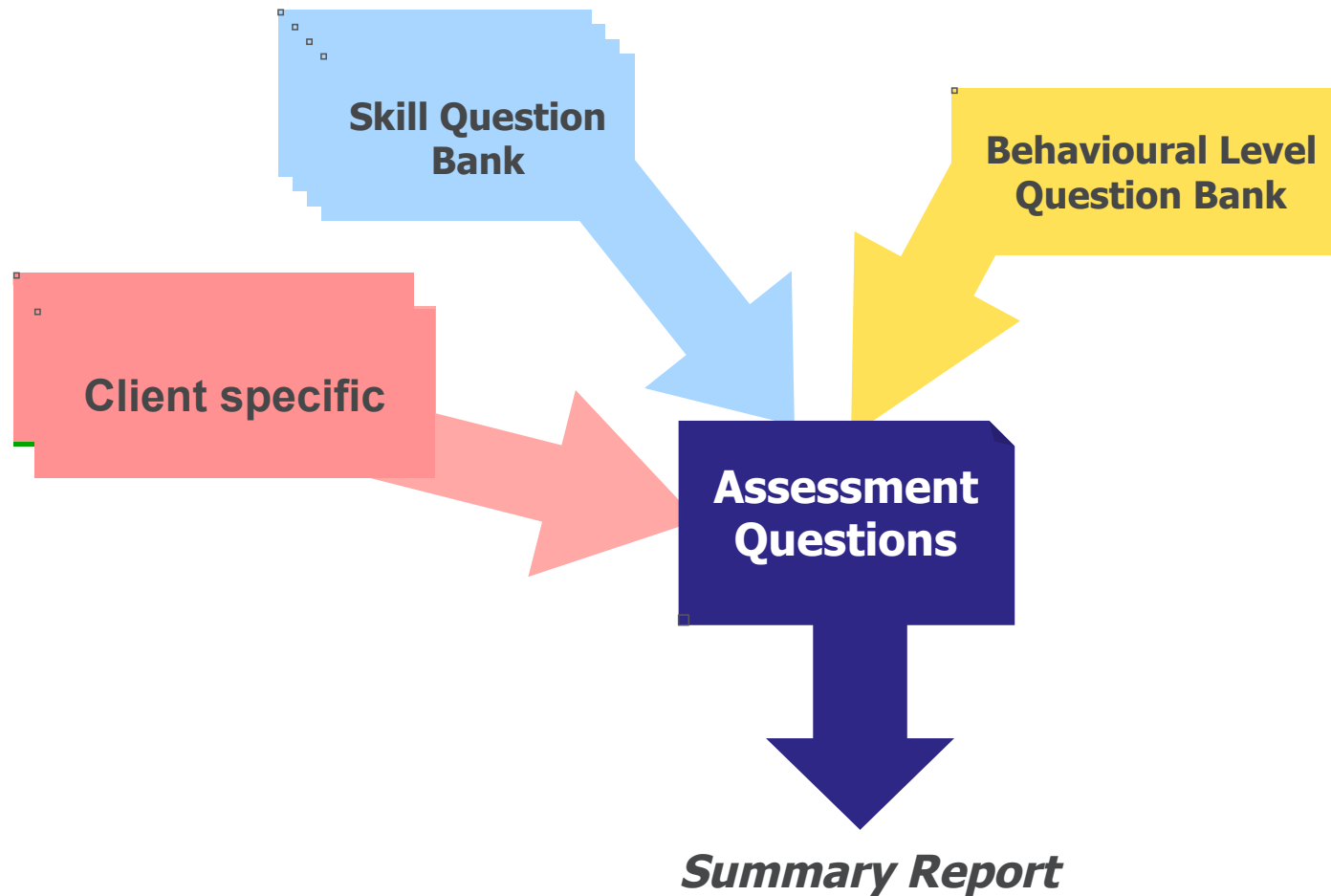
Core SFIA skills

Business analysis (BUAN)

Requirements definition and management (REQM)

Stakeholder relationship management (RLMT)

Professional Validation





Business Analyst



Add Skill Areas to this Assessment

Question Bank Included	Question Bank Available	
Code	Name	% of Questions
AML000000139	SDI Systems Development - REQM - Level 4	25
AML000000140	Business Change - BUAN - Level 4	25
AML000000158	Stakeholder Relationship Management - RLMT - Level 4	25
AML000000274	SFIA Skills Evaluator for Business Skills - Level 4	25

[◀ Back](#) [▶ Next](#)

Assigned By: The [Open University](#)

Assessment: AML000000123

Attempt No: 2

Time remaining: 00:26:17

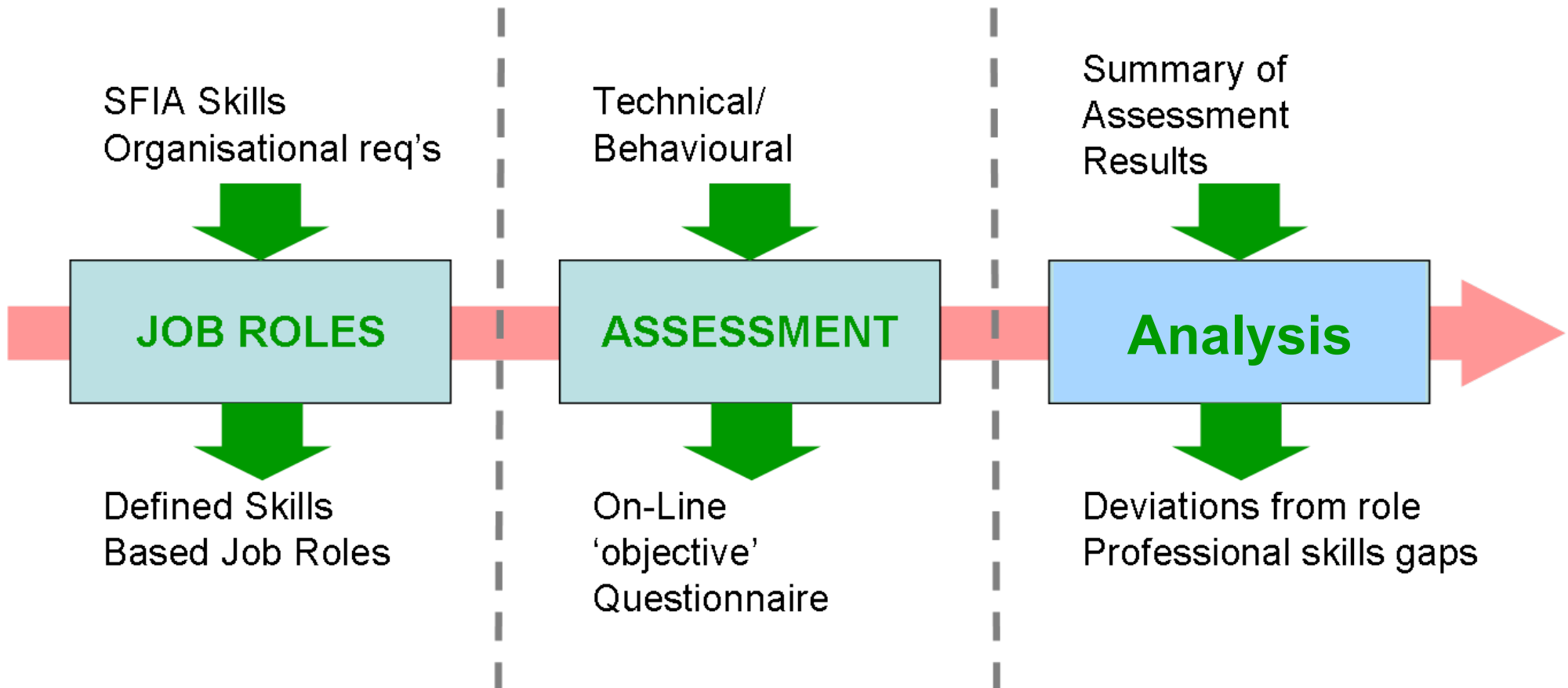
Q15 of 20

Read the following statements and choose the one that most accurately describes how complex and varied your current role is:

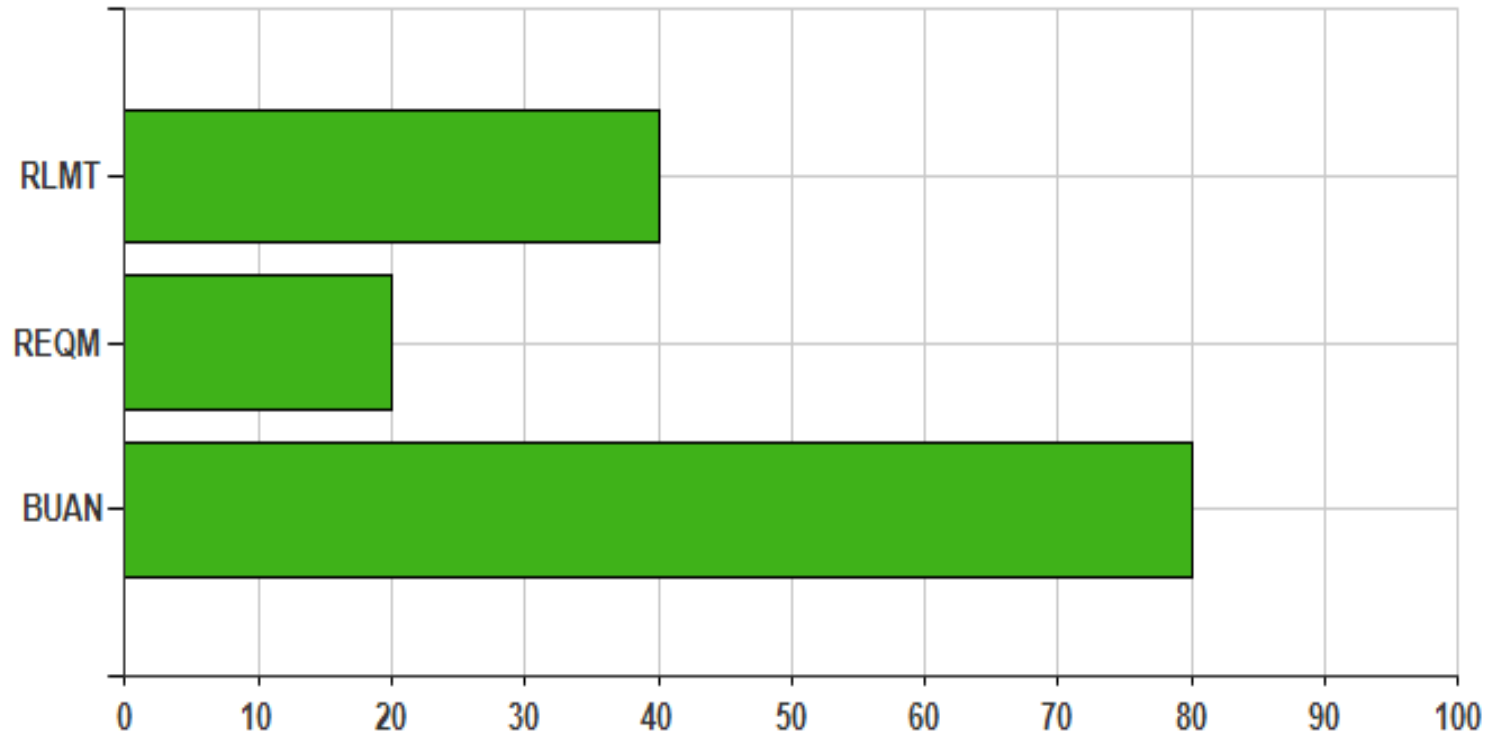
- I perform an extensive range and variety of complex technical and/or professional work activities. I undertake work, which requires the application of fundamental principles in a wide and often unpredictable range of contexts. I understand the relationship between my own specialism and wider customer/organisational requirements.
- I perform a broad range of work, sometimes complex and non-routine, in a variety of environments. I apply a methodical approach to problem definition and resolution.
- I perform highly complex work activities covering technical, financial and quality aspects. I contribute to the formulation and implementation of IT strategy. I creatively apply a wide range of technical and/or management principles.
- I perform a broad range of complex technical or professional work activities, in a variety of contexts. I investigate, define and resolve complex problems.

[◀ Back](#)[▶ Submit My Answer](#)[▶ Skip](#)[⏏ Exit](#)

1 2 3 4 5 6 7 8 9 10 11 12 13 14 15 16 17 18 19 20

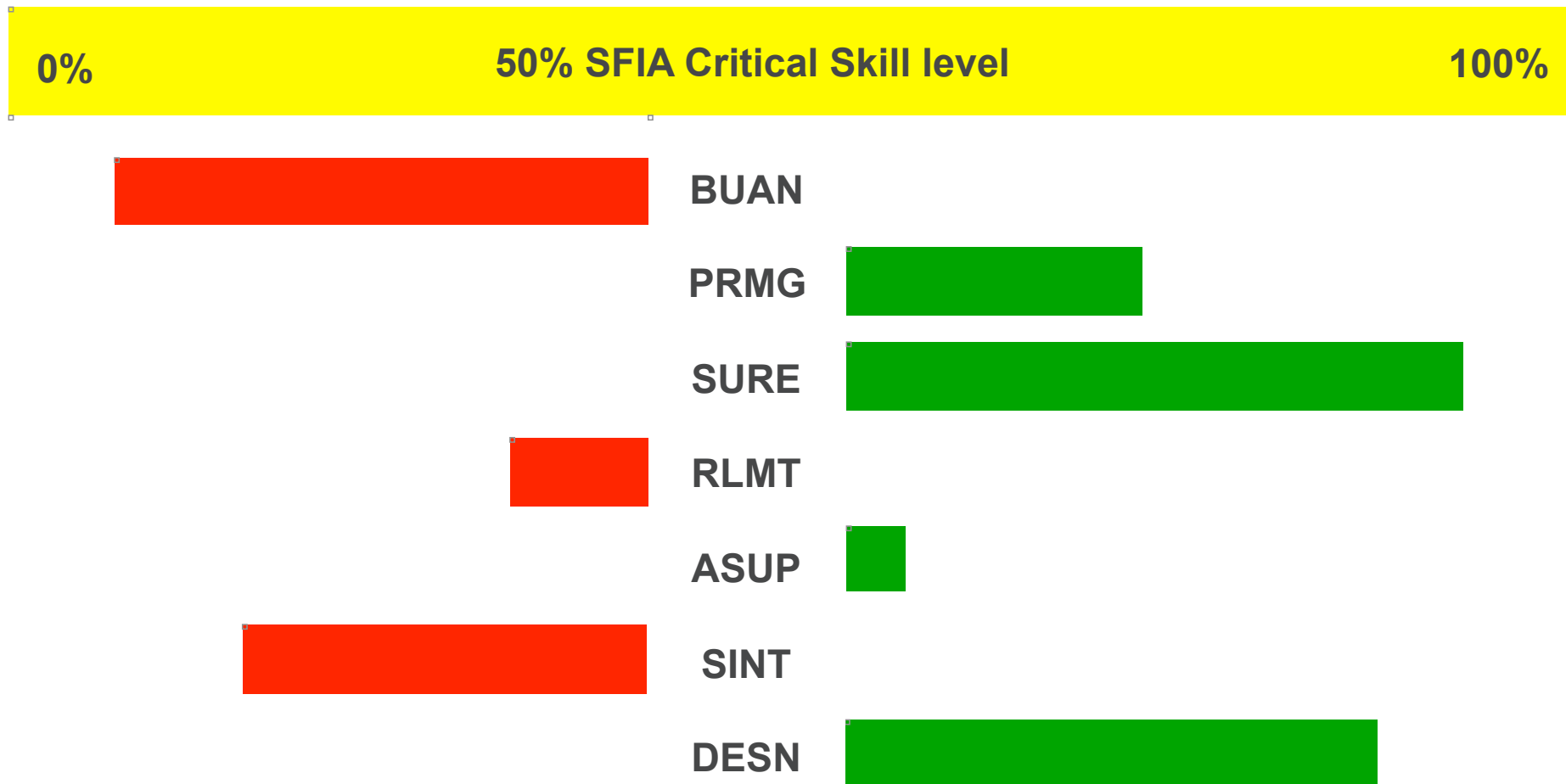


Candidate summary



Competency indicator

Group Competency Indicator





ASSESSMENT

E-ASSESSMENT BUILDER

- MULTIPLE QUESTION WRITING FORMATS
- TRAINING OUTCOMES PER QUESTION
- PASS RATE SETTING AND TIMING MANAGEMENT
- EASY TO USE - LOW COST DELIVERY



Welcome to Validateskills the online Assessment Management Company

- [ABOUT](#)
- [ITIL](#)
- [E-EDUCATE](#)

Who Are We

Validateskills.com is a unique application that offers the flexibility of a question writing tool combined with an e-portfolio management [tools](#). If you use paper based exams or you are looking to create online assessments then let us help. We can assist you in building your

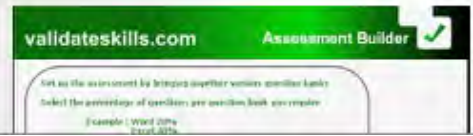
What We Do?

- [Question Writing Tool](#)
- [E-portfolio Capabilities](#)
- [Exam Management](#)
- [Learning Document Repository](#)

[▶ Client login](#)

[▶ Candidate login](#)

If you require assistance in managing your assessment or exam programmes talk to us about our complete service. Our experience in qualification delivery will give you confidence in what we do.





Where would it fit

To assess the existing capabilities and competences of an individual through skill set validation

To evaluate a job interviewee's capabilities and competences

To demonstrate the learning requirement for someone considering studying for a specific job role

To demonstrate a gap in someone's capabilities and competences

To evaluate a student's progress against the course material at some point during their studies

To qualify students during and on completion of an Apprenticeships



Early Pilot evidence

- Is this some sort of self-assessment?
- Does it lead to a qualification?
- I've no idea what a CATWOE or a PESTLE is.
- These questions sound more like an assessment of a candidate to point them at the right course for them to take.
- I thought the interface worked well and the questions were well presented and clear.
- I'm guessing that a course would have been taken first to understand the terminology used.
- Both constructive and insightful I think.
- In terms of the questions, they were clearly defined.



Learning & Development
Specialist Group

Enabling the
information society

Benefits

- IT professional standards
- Multiple site usage
- Client internal management
- Skills screening
- Group competence management
- Personal development
- Recruitment
- Core assessment standards
- Contractor skills clarification





Learning & Development
Specialist Group

Enabling the
information society

Thank You

Contact details: kevin.tibbs@validateskills.com

